

**DATASHEET**

**Fascin Rabbit Polyclonal Antibody**

CAT. NO. APA12123

**KEY FEATURES**

Target	Fascin	Source / Host	Rabbit
Reactivity	Human	Clonality	Polyclonal
Applications	WB	Conjugation	Unconjugated
Form / Buffer	Liquid in 0.42% Potassium phosphate, 0.87% Sodium chloride, pH 7.3, 30% glycerol, and 0.01% sodium azide.		Storage at -20°C

**BACKGROUND**

Actin-binding protein that contains 2 major actin binding sites . Organizes filamentous actin into parallel bundles . Plays a role in the organization of actin filament bundles and the formation of microspikes, membrane ruffles, and stress fibers . Important for the formation of a diverse set of cell protrusions, such as filopodia, and for cell motility and migration . Mediates reorganization of the actin cytoskeleton and axon growth cone collapse in response to NGF .

**APPLICATION**

To ensure optimal assay performance, AREX recommends conducting reagent titration tailored to each testing system for optimal detection results.

WB	1:500 - 1:1000
----	----------------

\*Results are sample-specific. Please refer to your local assay conditions and test parameters for reference.

**PRODUCT OVERVIEW**

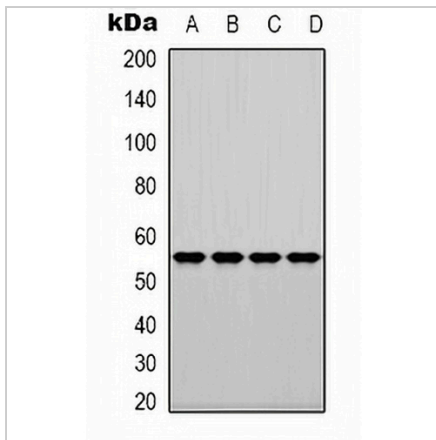
Description	Rabbit polyclonal antibody to Fascin
Specificity	Recognizes endogenous levels of Fascin protein.
Antibody Type	Primary antibody
Immunogen	KLH-conjugated synthetic peptide encompassing a sequence within the center region of human Fascin. The exact sequence is proprietary.
Purification	The antibody was purified by immunogen affinity chromatography.
Molecular Weight	Predicted: 54 kD; Observed: 55 kD
Form/Buffer	Liquid in 0.42% Potassium phosphate, 0.87% Sodium chloride, pH 7.3, 30% glycerol, and 0.01% sodium azide.
Alternative Names	FAN1; HSN; SNL; Fascin; 55 kDa actin-bundling protein; Singed-like protein; p55
Gene Symbol	FSCN1
Entrez Gene	6624(Human)
SwissProt	Q16658(Human)

\*AREX continuously optimizes our products. Webpage content may not reflect the latest updates. For inquiries, please contact [info@arexbio.com](mailto:info@arexbio.com) or your local distributor.

\*Clone Number, Reactivity, Source/Host and Clonality can be found in the product name and Key Features section above.

**DATASHEET****Fascin Rabbit Polyclonal Antibody**

CAT. NO. APA12123

**DATA**

Western blot analysis of Fascin expression in HuvEc (A), K562 (B), HT29 (C), A549 (D) whole cell lysates. (Predicted band size: 54 kD; Observed band size: 55 kD)

**STORAGE**

Store at 4°C short term. For long term storage, store at -20°C, avoiding freeze/thaw cycles.

**NOTE**

For Research Use Only. Not for diagnostic, therapeutics, prophylactic or in vivo use.