

DATASHEET

CD19 Rabbit Polyclonal Antibody

CAT. NO. APA12130

KEY FEATURES

Target	CD19	Source / Host	Rabbit
Reactivity	Human, Mouse, Rat	Clonality	Polyclonal
Applications	WB, IHC	Conjugation	Unconjugated
Form / Buffer	Liquid in 0.42% Potassium phosphate, 0.87% Sodium chloride, pH 7.3, 30% glycerol, and 0.01% sodium azide.		Storage at-20°C

BACKGROUND

Functions as a coreceptor for the B-cell antigen receptor complex (BCR) on B-lymphocytes on B-lymphocytes . Decreases the threshold for activation of downstream signaling pathways and for triggering B-cell responses to antigens . Activates signaling pathways that lead to the activation of phosphatidylinositol 3-kinase and the mobilization of intracellular Ca(2+) stores . Is not required for early steps during B cell differentiation in the blood marrow . Required for normal differentiation of B-1 cells . Required for normal B cell differentiation and proliferation in response to antigen challenges . Required for normal levels of serum immunoglobulins, and for production of high-affinity antibodies in response to antigen challenge .

APPLICATION

To ensure optimal assay performance, AREX recommends conducting reagent titration tailored to each testing system for optimal detection results.

WB	1:500 - 1:1000
IHC	1:100 - 1:200

*Results are sample-specific. Please refer to your local assay conditions and test parameters for reference.

PRODUCT OVERVIEW

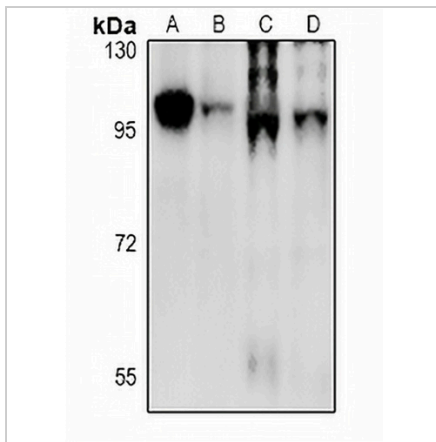
Description	Rabbit polyclonal antibody to CD19
Specificity	Recognizes endogenous levels of CD19 protein.
Antibody Type	Primary antibody
Immunogen	KLH-conjugated synthetic peptide encompassing a sequence within the center region of human CD19. The exact sequence is proprietary.
Purification	The antibody was purified by immunogen affinity chromatography.
Molecular Weight	Predicted: 61 kD; Observed: 100 kD
Form/Buffer	Liquid in 0.42% Potassium phosphate, 0.87% Sodium chloride, pH 7.3, 30% glycerol, and 0.01% sodium azide.
Alternative Names	B-lymphocyte antigen CD19; B-lymphocyte surface antigen B4; Differentiation antigen CD19; T-cell surface antigen Leu-12; CD19
Gene Symbol	CD19
Entrez Gene	930(Human); 12478(Mouse)
SwissProt	P15391(Human); P25918(Mouse)

*AREX continuously optimizes our products. Webpage content may not reflect the latest updates. For inquiries, please contact info@arexbio.com or your local distributor.

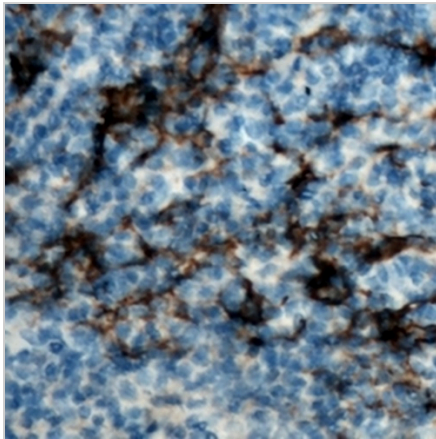
*Clone Number, Reactivity, Source/Host and Clonality can be found in the product name and Key Features section above.

DATASHEET**CD19 Rabbit Polyclonal Antibody**

CAT. NO. APA12130

DATA

Western blot analysis of CD19 expression in mouse spleen (A), rat spleen (B), SGC7901 (C), HCT116 (D) whole cell lysates. (Predicted band size: 61 kD; Observed band size: 100 kD)



Immunohistochemical analysis of CD19 staining in human tonsil formalin fixed paraffin embedded tissue section. The section was pre-treated using heat mediated antigen retrieval with sodium citrate buffer (pH 6.0). The section was then incubated with the antibody at room temperature and detected using an HRP conjugated compact polymer system. DAB was used as the chromogen. The section was then counterstained with haematoxylin and mounted with DPX.

STORAGE

Store at 4°C short term. For long term storage, store at -20°C, avoiding freeze/thaw cycles.

NOTE

For Research Use Only. Not for diagnostic, therapeutics, prophylactic or in vivo use.