

DATASHEET

CD100 Rabbit Polyclonal Antibody

CAT. NO. APA12134

KEY FEATURES

Target	CD100	Source / Host	Rabbit
Reactivity	Human	Clonality	Polyclonal
Applications	WB	Conjugation	Unconjugated
Form / Buffer	Liquid in 0.42% Potassium phosphate, 0.87% Sodium chloride, pH 7.3, 30% glycerol, and 0.01% sodium azide.		Storage at -20°C

BACKGROUND

Cell surface receptor for PLXNB1 and PLXNB2 that plays an important role in cell-cell signaling . Regulates GABAergic synapse development . Promotes the development of inhibitory synapses in a PLXNB1-dependent manner . Modulates the complexity and arborization of developing neurites in hippocampal neurons by activating PLXNB1 and interaction with PLXNB1 mediates activation of RHOA . Promotes the migration of cerebellar granule cells . Plays a role in the immune system; induces B-cells to aggregate and improves their viability (in vitro) . Induces endothelial cell migration through the activation of PTK2B/PYK2, SRC, and the phosphatidylinositol 3-kinase-AKT pathway .

APPLICATION

To ensure optimal assay performance, AREX recommends conducting reagent titration tailored to each testing system for optimal detection results.

WB	1:500 - 1:1000
----	----------------

*Results are sample-specific. Please refer to your local assay conditions and test parameters for reference.

PRODUCT OVERVIEW

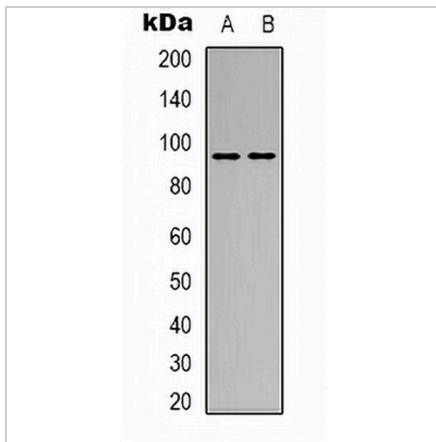
Description	Rabbit polyclonal antibody to CD100
Specificity	Recognizes endogenous levels of CD100 protein.
Antibody Type	Primary antibody
Immunogen	KLH-conjugated synthetic peptide encompassing a sequence within the N-term region of human CD100. The exact sequence is proprietary.
Purification	The antibody was purified by immunogen affinity chromatography.
Molecular Weight	Predicted: 96 kD; Observed: 150 kD
Form/Buffer	Liquid in 0.42% Potassium phosphate, 0.87% Sodium chloride, pH 7.3, 30% glycerol, and 0.01% sodium azide.
Alternative Names	C9orf164; CD100; SEMAJ; Semaphorin-4D; A8; BB18; GR3; CD100
Gene Symbol	SEMA4D
Entrez Gene	10507(Human)
SwissProt	Q92854(Human)

*AREX continuously optimizes our products. Webpage content may not reflect the latest updates. For inquiries, please contact info@arexbio.com or your local distributor.

*Clone Number, Reactivity, Source/Host and Clonality can be found in the product name and Key Features section above.

DATASHEET**CD100 Rabbit Polyclonal Antibody**

CAT. NO. APA12134

DATA

Western blot analysis of CD100 expression in MCF7 (A), L929 (B) whole cell lysates. (Predicted band size: 96 kD; Observed band size: 150 kD)

STORAGE

Store at 4°C short term. For long term storage, store at -20°C, avoiding freeze/thaw cycles.

NOTE

For Research Use Only. Not for diagnostic, therapeutics, prophylactic or in vivo use.