

DATASHEET

CCL4L1 Rabbit Polyclonal Antibody

CAT. NO. APA12157

KEY FEATURES

Target	CCL4L1	Source / Host	Rabbit
Reactivity	Human	Clonality	Polyclonal
Applications	WB	Conjugation	Unconjugated
Form / Buffer	Liquid in 0.42% Potassium phosphate, 0.87% Sodium chloride, pH 7.3, 30% glycerol, and 0.01% sodium azide.		Storage at -20°C

BACKGROUND

Chemokine that induces chemotaxis of cells expressing CCR5 or CCR1. Inhibits HIV replication in peripheral blood monocytes that express CCR5.

APPLICATION

To ensure optimal assay performance, AREX recommends conducting reagent titration tailored to each testing system for optimal detection results.

WB	1:500 - 1:1000
----	----------------

*Results are sample-specific. Please refer to your local assay conditions and test parameters for reference.

PRODUCT OVERVIEW

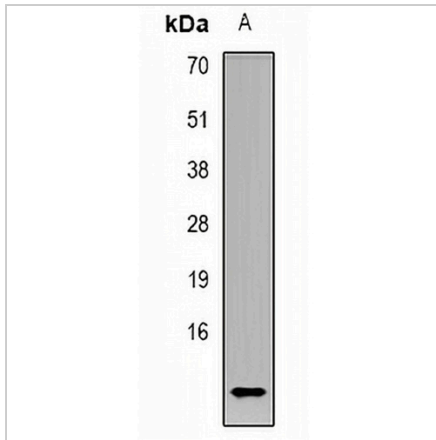
Description	Rabbit polyclonal antibody to CCL4L1
Specificity	Recognizes endogenous levels of CCL4L1 protein.
Antibody Type	Primary antibody
Immunogen	KLH-conjugated synthetic peptide encompassing a sequence within the center region of human CCL4L1. The exact sequence is proprietary.
Purification	The antibody was purified by immunogen affinity chromatography.
Molecular Weight	Predicted: 10 kD; Observed: 10 kD
Form/Buffer	Liquid in 0.42% Potassium phosphate, 0.87% Sodium chloride, pH 7.3, 30% glycerol, and 0.01% sodium azide.
Alternative Names	CCL4L; LAG1; SCYA4L1; CCL4L; SCYA4L2; C-C motif chemokine 4-like; Lymphocyte activation gene 1 protein; LAG-1; Macrophage inflammatory protein 1-beta; MIP-1-beta; Monocyte adherence-induced protein 5-alpha; Small-inducible cytokine A4-like
Gene Symbol	CCL4L1; CCL4L2
Entrez Gene	388372; 9560(Human)
SwissProt	Q8NHW4(Human)

*AREX continuously optimizes our products. Webpage content may not reflect the latest updates. For inquiries, please contact info@arexbio.com or your local distributor.

*Clone Number, Reactivity, Source/Host and Clonality can be found in the product name and Key Features section above.

DATASHEET**CCL4L1 Rabbit Polyclonal Antibody**

CAT. NO. APA12157

DATA

Western blot analysis of CCL4L1 expression in K562 (A) whole cell lysates. (Predicted band size: 10 kD; Observed band size: 10 kD)

STORAGE

Store at 4°C short term. For long term storage, store at -20°C, avoiding freeze/thaw cycles.

NOTE

For Research Use Only. Not for diagnostic, therapeutics, prophylactic or in vivo use.