

DATASHEET

MC5 Receptor Rabbit Polyclonal Antibody

CAT. NO. APA12172

KEY FEATURES

Target	MC5 Receptor	Source / Host	Rabbit
Reactivity	Human, Mouse, Bovine, Sheep, Zebrafish	Clonality	Polyclonal
Applications	WB, IF/ICC	Conjugation	Unconjugated
Form / Buffer	Liquid in 0.42% Potassium phosphate, 0.87% Sodium chloride, pH 7.3, 30% glycerol, and 0.01% sodium azide.		Storage at -20°C

BACKGROUND

G protein-coupled receptor for melanocyte-stimulating hormones (alpha- beta- and gamma-MSH) and corticotropin/ACTH, which are peptide products of the POMC precursor and corticotropin/ACTH, which are peptide products of the POMC precursor . Upon activation, couples to G(s) protein, stimulating adenylate cyclase and the cAMP-dependent signaling pathway . Also activates ERK1/2 via a PI3K-dependent signaling mechanism . Order of potency of natural melanocortins in receptor activation is alpha-MSH > ACTH > beta-MSH > gamma-MSH . Plays a key role in immune response, and is essential for temperature regulation and exocrine gland function .

APPLICATION

To ensure optimal assay performance, AREX recommends conducting reagent titration tailored to each testing system for optimal detection results.

WB	1:500 - 1:1000
IF/ICC	1:100 - 1:500

*Results are sample-specific. Please refer to your local assay conditions and test parameters for reference.

PRODUCT OVERVIEW

Description	Rabbit polyclonal antibody to MC5 Receptor
Specificity	Recognizes endogenous levels of MC5 Receptor protein.
Antibody Type	Primary antibody
Immunogen	KLH-conjugated synthetic peptide encompassing a sequence within the C-term region of human MC5 Receptor. The exact sequence is proprietary.
Purification	The antibody was purified by immunogen affinity chromatography.
Molecular Weight	Predicted: 36 kD; Observed: 43 kD
Form/Buffer	Liquid in 0.42% Potassium phosphate, 0.87% Sodium chloride, pH 7.3, 30% glycerol, and 0.01% sodium azide.
Alternative Names	Melanocortin receptor 5; MC5-R; MC-2
Gene Symbol	MC5R
Entrez Gene	4161(Human)
SwissProt	P33032(Human); P41149(Mouse)

*AREX continuously optimizes our products. Webpage content may not reflect the latest updates. For inquiries, please contact info@arexbio.com or your local distributor.

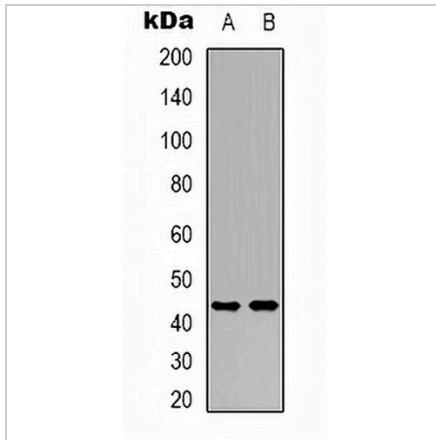
*Clone Number, Reactivity, Source/Host and Clonality can be found in the product name and Key Features section above.

DATASHEET

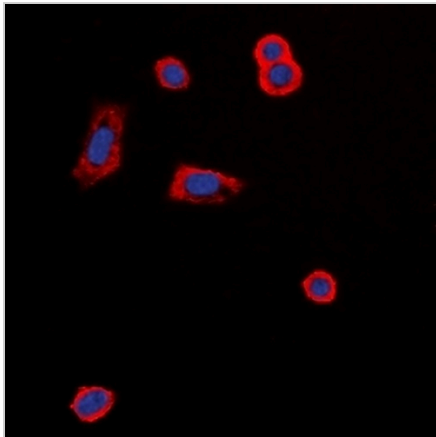
MC5 Receptor Rabbit Polyclonal Antibody

CAT. NO. APA12172

DATA



Western blot analysis of MC5 Receptor expression in K562 (A), NIH3T3 (B) whole cell lysates. (Predicted band size: 36 kD; Observed band size: 43 kD)



Immunofluorescent analysis of MC5 Receptor staining in MCF7 cells. Formalin-fixed cells were permeabilized with 0.1% Triton X-100 in TBS for 5-10 minutes and blocked with 3% BSA-PBS for 30 minutes at room temperature. Cells were probed with the primary antibody in 3% BSA-PBS and incubated overnight at 4 °C in a hidified chamber. Cells were washed with PBST and incubated with a DyLight 594-conjugated secondary antibody (red) in PBS at room temperature in the dark. DAPI was used to stain the cell nuclei (blue).

STORAGE

Store at 4°C short term. For long term storage, store at -20°C, avoiding freeze/thaw cycles.

NOTE

For Research Use Only. Not for diagnostic, therapeutics, prophylactic or in vivo use.