

DATASHEET

Plasma Kallikrein HC Rabbit Polyclonal Antibody

CAT. NO. APA12183

KEY FEATURES

Target	Plasma Kallikrein HC	Source / Host	Rabbit
Reactivity	Human	Clonality	Polyclonal
Applications	WB, IHC	Conjugation	Unconjugated
Form / Buffer	Liquid in 0.42% Potassium phosphate, 0.87% Sodium chloride, pH 7.3, 30% glycerol, and 0.01% sodium azide.		Storage at -20°C

BACKGROUND

Participates in the surface-dependent activation of blood coagulation. Activates, in a reciprocal reaction, coagulation factor XII/F12 after binding to negatively charged surfaces. Releases bradykinin from HMW kininogen and may also play a role in the renin-angiotensin system by converting prorenin into renin.

APPLICATION

To ensure optimal assay performance, AREX recommends conducting reagent titration tailored to each testing system for optimal detection results.

WB	1:500 - 1:1000
IHC	1:100 - 1:200

*Results are sample-specific. Please refer to your local assay conditions and test parameters for reference.

PRODUCT OVERVIEW

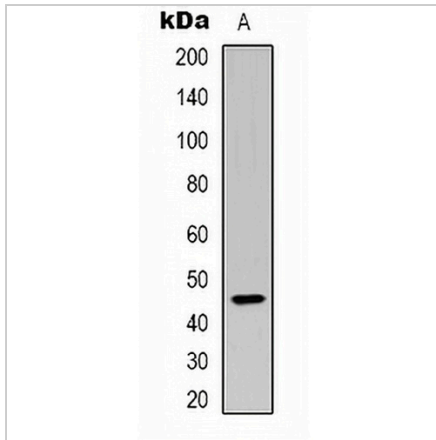
Description	Rabbit polyclonal antibody to Plasma Kallikrein HC
Specificity	Recognizes endogenous levels of Plasma Kallikrein HC protein.
Antibody Type	Primary antibody
Immunogen	KLH-conjugated synthetic peptide encompassing a sequence within the center region of human Plasma Kallikrein HC. The exact sequence is proprietary.
Purification	The antibody was purified by immunogen affinity chromatography.
Molecular Weight	Predicted: 71 kD; Observed: 45 kD
Form/Buffer	Liquid in 0.42% Potassium phosphate, 0.87% Sodium chloride, pH 7.3, 30% glycerol, and 0.01% sodium azide.
Alternative Names	KLK3; Plasma kallikrein; Fletcher factor; Kininogenin; Plasma prekallikrein
Gene Symbol	KLKB1
Entrez Gene	3818(Human)
SwissProt	P03952(Human)

*AREX continuously optimizes our products. Webpage content may not reflect the latest updates. For inquiries, please contact info@arexbio.com or your local distributor.

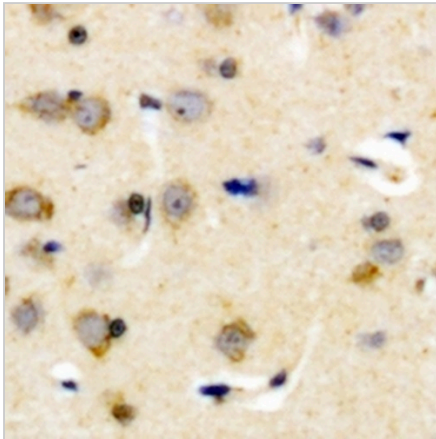
*Clone Number, Reactivity, Source/Host and Clonality can be found in the product name and Key Features section above.

DATASHEET**Plasma Kallikrein HC Rabbit Polyclonal Antibody**

CAT. NO. APA12183

DATA

Western blot analysis of Plasma Kallikrein HC expression in HeLa (A) whole cell lysates. (Predicted band size: 71 kD; Observed band size: 45 kD)



Immunohistochemical analysis of Plasma Kallikrein HC staining in human brain formalin fixed paraffin embedded tissue section. The section was pre-treated using heat mediated antigen retrieval with sodium citrate buffer (pH 6.0). The section was then incubated with the antibody at room temperature and detected using an HRP conjugated compact polymer system. DAB was used as the chromogen. The section was then counterstained with haematoxylin and mounted with DPX.

STORAGE

Store at 4°C short term. For long term storage, store at -20°C, avoiding freeze/thaw cycles.

NOTE

For Research Use Only. Not for diagnostic, therapeutics, prophylactic or in vivo use.