

DATASHEET

Gamma-NaCH Rabbit Polyclonal Antibody

CAT. NO. APA12200

KEY FEATURES

Target	Gamma-NaCH	Source / Host	Rabbit
Reactivity	Human, Mouse, Rat	Clonality	Polyclonal
Applications	WB	Conjugation	Unconjugated
Form / Buffer	Liquid in 0.42% Potassium phosphate, 0.87% Sodium chloride, pH 7.3, 30% glycerol, and 0.01% sodium azide.		Storage at -20°C

BACKGROUND

This is one of the three pore-forming subunits of the heterotrimeric epithelial sodium channel (ENaC), a critical regulator of sodium balance and fluid homeostasis, a critical regulator of sodium balance and fluid homeostasis. ENaC operates in epithelial tissues, where it mediates the electrodiffusion of sodium ions from extracellular fluid through the apical membrane of cells, with water following osmotically. It plays a key role in maintaining sodium homeostasis through electrogenic sodium reabsorption in the kidneys. Additionally, ENaC is essential for airway surface liquid homeostasis, which is crucial for proper mucus clearance.

APPLICATION

To ensure optimal assay performance, AREX recommends conducting reagent titration tailored to each testing system for optimal detection results.

WB	1:500 - 1:1000
----	----------------

*Results are sample-specific. Please refer to your local assay conditions and test parameters for reference.

PRODUCT OVERVIEW

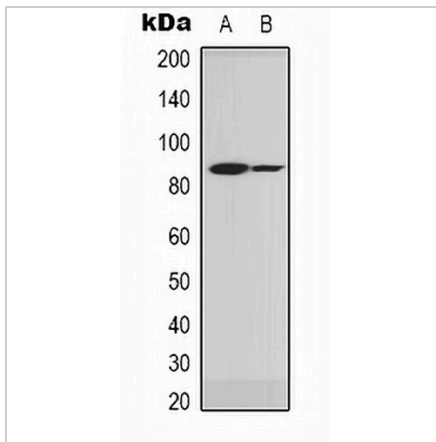
Description	Rabbit polyclonal antibody to Gamma-NaCH
Specificity	Recognizes endogenous levels of Gamma-NaCH protein.
Antibody Type	Primary antibody
Immunogen	KLH-conjugated synthetic peptide encompassing a sequence within the center region of human Gamma-NaCH. The exact sequence is proprietary.
Purification	The antibody was purified by immunogen affinity chromatography.
Molecular Weight	Predicted: 74 kD; Observed: 85 kD
Form/Buffer	Liquid in 0.42% Potassium phosphate, 0.87% Sodium chloride, pH 7.3, 30% glycerol, and 0.01% sodium azide.
Alternative Names	Amiloride-sensitive sodium channel subunit gamma; Epithelial Na(+) channel subunit gamma; ENaCG; Gamma-ENaC; Gamma-NaCH; Nonvoltage-gated sodium channel 1 subunit gamma; SCNEG
Gene Symbol	SCNN1G
Entrez Gene	6340(Human); 20278(Mouse); 24768(Rat)
SwissProt	P51170(Human); Q9WU39(Mouse); P37091(Rat)

*AREX continuously optimizes our products. Webpage content may not reflect the latest updates. For inquiries, please contact info@arexbio.com or your local distributor.

*Clone Number, Reactivity, Source/Host and Clonality can be found in the product name and Key Features section above.

DATASHEET**Gamma-NaCH Rabbit Polyclonal Antibody**

CAT. NO. APA12200

DATA

Western blot analysis of Gamma-NaCH expression in A549 (A), HEK293T (B) whole cell lysates. (Predicted band size: 74 kD; Observed band size: 85 kD)

STORAGE

Store at 4°C short term. For long term storage, store at -20°C, avoiding freeze/thaw cycles.

NOTE

For Research Use Only. Not for diagnostic, therapeutics, prophylactic or in vivo use.