

DATASHEET

NHERF2 Rabbit Polyclonal Antibody

CAT. NO. APA12206

KEY FEATURES

Target	NHERF2	Source / Host	Rabbit
Reactivity	Human, Mouse, Rat	Clonality	Polyclonal
Applications	WB	Conjugation	Unconjugated
Form / Buffer	Liquid in 0.42% Potassium phosphate, 0.87% Sodium chloride, pH 7.3, 30% glycerol, and 0.01% sodium azide.		Storage at-20°C

BACKGROUND

Scaffold protein that connects plasma membrane proteins with members of the ezrin/moesin/radixin family and thereby helps to link them to the actin cytoskeleton and to regulate their surface expression. Necessary for cAMP-mediated phosphorylation and inhibition of SLC9A3 . May also act as scaffold protein in the nucleus.

APPLICATION

To ensure optimal assay performance, AREX recommends conducting reagent titration tailored to each testing system for optimal detection results.

WB	1:500 - 1:2000
----	----------------

*Results are sample-specific. Please refer to your local assay conditions and test parameters for reference.

PRODUCT OVERVIEW

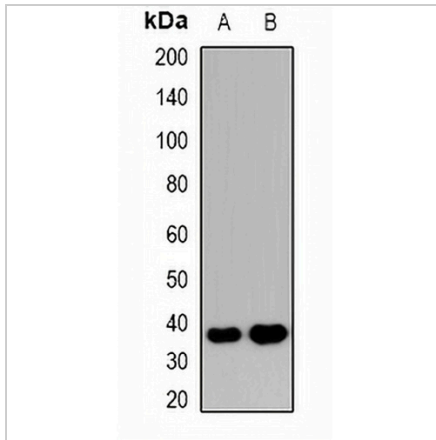
Description	Rabbit polyclonal antibody to NHERF2
Specificity	Recognizes endogenous levels of NHERF2 protein.
Antibody Type	Primary antibody
Immunogen	KLH-conjugated synthetic peptide encompassing a sequence within the N-term region of human NHERF2. The exact sequence is proprietary.
Purification	The antibody was purified by immunogen affinity chromatography.
Molecular Weight	Predicted: 37 kD; Observed: 37 kD
Form/Buffer	Liquid in 0.42% Potassium phosphate, 0.87% Sodium chloride, pH 7.3, 30% glycerol, and 0.01% sodium azide.
Alternative Names	NHERF2; Na(+)/H(+) exchange regulatory cofactor NHE-RF2; NHERF-2; NHE3 kinase A regulatory protein E3KARP; SRY-interacting protein 1; SIP-1; Sodium-hydrogen exchanger regulatory factor 2; Solute carrier family 9 isoform A3 regulatory factor 2; Tyrosine kinase activator protein 1; TKA-1
Gene Symbol	SLC9A3R2
Entrez Gene	9351(Human); 65962(Mouse); 116501(Rat)
SwissProt	Q15599(Human); Q9JHL1(Mouse); Q920G2(Rat)

*AREX continuously optimizes our products. Webpage content may not reflect the latest updates. For inquiries, please contact info@arexbio.com or your local distributor.

*Clone Number, Reactivity, Source/Host and Clonality can be found in the product name and Key Features section above.

DATASHEET**NHERF2 Rabbit Polyclonal Antibody**

CAT. NO. APA12206

DATA

Western blot analysis of NHERF2 expression in Jurkat (A), K562 (B) whole cell lysates. (Predicted band size: 37 kD; Observed band size: 37 kD)

STORAGE

Store at 4°C short term. For long term storage, store at -20°C, avoiding freeze/thaw cycles.

NOTE

For Research Use Only. Not for diagnostic, therapeutics, prophylactic or in vivo use.