

DATASHEET

GEF2 Rabbit Polyclonal Antibody

CAT. NO. APA12211

KEY FEATURES

Target	GEF2	Source / Host	Rabbit
Reactivity	Human, Mouse, Rat, Bovine	Clonality	Polyclonal
Applications	WB	Conjugation	Unconjugated
Form / Buffer	Liquid in 0.42% Potassium phosphate, 0.87% Sodium chloride, pH 7.3, 30% glycerol, and 0.01% sodium azide.		Storage at -20°C

BACKGROUND

Ubiquitin-like modifier involved in intra-Golgi traffic . Modulates intra-Golgi transport through coupling between NSF activity and SNAREs activation . It first stimulates the ATPase activity of NSF which in turn stimulates the association with GOSR1 . Involved in autophagy . Plays a role in mitophagy which contributes to regulate mitochondrial quantity and quality by eliminating the mitochondria to a basal level to fulfill cellular energy requirements and preventing excess ROS production . Whereas LC3s are involved in elongation of the phagophore membrane, the GABARAP/GATE-16 subfamily is essential for a later stage in autophagosome maturation .

APPLICATION

To ensure optimal assay performance, AREX recommends conducting reagent titration tailored to each testing system for optimal detection results.

WB	1:500 - 1:2000
----	----------------

*Results are sample-specific. Please refer to your local assay conditions and test parameters for reference.

PRODUCT OVERVIEW

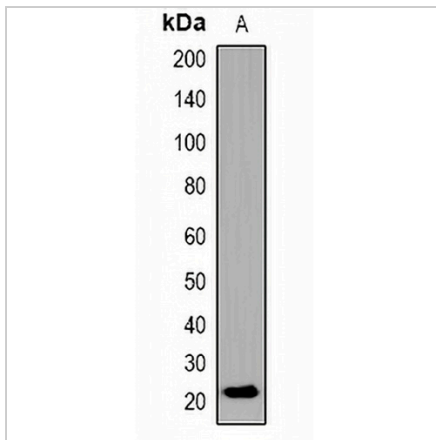
Description	Rabbit polyclonal antibody to GEF2
Specificity	Recognizes endogenous levels of GEF2 protein.
Antibody Type	Primary antibody
Immunogen	KLH-conjugated synthetic peptide encompassing a sequence within the C-term region of human GEF2. The exact sequence is proprietary.
Purification	The antibody was purified by immunogen affinity chromatography.
Molecular Weight	Predicted: 13 kD; Observed: 21 kD
Form/Buffer	Liquid in 0.42% Potassium phosphate, 0.87% Sodium chloride, pH 7.3, 30% glycerol, and 0.01% sodium azide.
Alternative Names	FLC3A; GEF2; Gamma-aminobutyric acid receptor-associated protein-like 2; GABA(A) receptor-associated protein-like 2; Ganglioside expression factor 2; GEF-2; General protein transport factor p16; Golgi-associated ATPase enhancer of 16 kDa; GATE-16; MAP1 light chain 3-related protein
Gene Symbol	GABARAPL2
Entrez Gene	11345(Human); 93739(Mouse); 100359937; 64670(Rat)
SwissProt	P60520(Human); P60521(Mouse); P60522(Rat)

*AREX continuously optimizes our products. Webpage content may not reflect the latest updates. For inquiries, please contact info@arexbio.com or your local distributor.

*Clone Number, Reactivity, Source/Host and Clonality can be found in the product name and Key Features section above.

DATASHEET**GEF2 Rabbit Polyclonal Antibody**

CAT. NO. APA12211

DATA

Western blot analysis of GEF2 expression in HeLa (A) whole cell lysates. (Predicted band size: 13 kD; Observed band size: 21 kD)

STORAGE

Store at 4°C short term. For long term storage, store at -20°C, avoiding freeze/thaw cycles.

NOTE

For Research Use Only. Not for diagnostic, therapeutics, prophylactic or in vivo use.