

DATASHEET

Cytokeratin-pan Rabbit Polyclonal Antibody

CAT. NO. APA12218

KEY FEATURES

Target	Cytokeratin-pan	Source / Host	Rabbit
Reactivity	Human, Mouse, Rat, Bovine, Dog	Clonality	Polyclonal
Applications	WB	Conjugation	Unconjugated
Form / Buffer	Liquid in 0.42% Potassium phosphate, 0.87% Sodium chloride, pH 7.3, 30% glycerol, and 0.01% sodium azide.	Storage	at-20°C

BACKGROUND

Probably contributes to terminal cornification . Associated with keratinocyte activation, proliferation and keratinization . Required for maintenance of corneocytes and keratin filaments in suprabasal keratinocytes in the epidermis of the ear, potentially via moderation of expression and localization of keratins and their partner proteins . Plays a role in the establishment of the epidermal barrier on plantar skin .

APPLICATION

To ensure optimal assay performance, AREX recommends conducting reagent titration tailored to each testing system for optimal detection results.

WB	1:500 - 1:2000
----	----------------

*Results are sample-specific. Please refer to your local assay conditions and test parameters for reference.

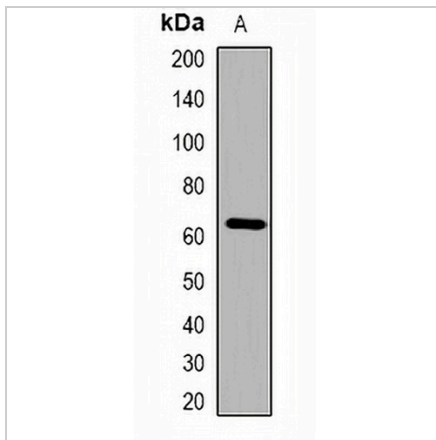
PRODUCT OVERVIEW

Description	Rabbit polyclonal antibody to Cytokeratin-pan
Specificity	Recognizes endogenous levels of Cytokeratin-pan protein.
Antibody Type	Primary antibody
Immunogen	KLH-conjugated synthetic peptide encompassing a sequence within the center region of human Cytokeratin-pan. The exact sequence is proprietary.
Purification	The antibody was purified by immunogen affinity chromatography.
Molecular Weight	Predicted: 65; Observed: 65 kD
Form/Buffer	Liquid in 0.42% Potassium phosphate, 0.87% Sodium chloride, pH 7.3, 30% glycerol, and 0.01% sodium azide.

Alternative Names KRT2; KRT2A; KRT2E; Keratin, type II cytoskeletal 2 epidermal; Cytokeratin-2e; CK-2e; Epithelial keratin-2e; Keratin-2 epidermis; Keratin-2e; K2e; Type-II keratin Kb2; KRT76; KRT2B; KRT2P; Keratin, type II cytoskeletal 2 oral; Cytokeratin-2P; CK-2P; K2P; Keratin-76; K76; Type-II keratin Kb9; KRT3; Keratin, type II cytoskeletal 3; 65 kDa cyto keratin; Cytokeratin-3; CK-3; Keratin-3; K3; Type-II keratin Kb3; KRT5; Keratin, type II cytoskeletal 5; 58 kDa cyto keratin; Cytokeratin-5; CK-5; Keratin-5; K5; Type-II keratin Kb5; KRT6A; K6A; KRT6D; Keratin, type II cytoskeletal 6A; Cytokeratin-6A; CK-6A; Cytokeratin-6D; CK-6D; Keratin-6A; K6A; Type-II keratin Kb6; allergen Hom s 5; KRT6B; K6B; KRTL1; Keratin, type II cytoskeletal 6B; Cytokeratin-6B; CK-6B; Keratin-6B; K6B; Type-II keratin Kb10; KRT6C; KRT6E; Keratin, type II cytoskeletal 6C; Cytokeratin-6C; CK-6C; Cytokeratin-6E; CK-6E; Keratin K6h; Keratin-6C; K6C; Type-II keratin Kb12; KRT71; K6IRS1; KB34; KRT6IRS1; Keratin, type II cytoskeletal 71; Cytokeratin-71; CK-71; Keratin-71; K71; Type II inner root sheath-specific keratin-K6irs1; Keratin 6 irs; hK6irs; hK6irs1; Type-II keratin Kb34; KRT72; K6IRS2; KB35; KRT6; KRT6IRS2; Keratin, type II cytoskeletal 72; Cytokeratin-72; CK-72; Keratin-72; K72; Type II inner root sheath-specific keratin-K6irs2; Type-II keratin Kb35; KRT73; K6IRS3; KB36; KRT6IRS3; Keratin, type II cytoskeletal 73; Cytokeratin-73; CK-73; Keratin-73; K73; Type II inner root sheath-specific keratin-K6irs3; Type-II keratin Kb36; KRT74; K6IRS4; KB37; KRT5C; KRT6IRS4; Keratin, type II cytoskeletal 74; Cytokeratin-74; CK-74; Keratin-5c; K5C; Keratin-74; K74; Type II inner root sheath-specific keratin-K6irs4; Type-II keratin Kb37; KRT75; K6HF; KB18; Keratin, type II

DATASHEET**Cytokeratin-pan Rabbit Polyclonal Antibody**

CAT. NO. APA12218

DATA

Western blot analysis of Cytokeratin-pan expression in mouse lung (A) whole cell lysates.
(Predicted band size: 65; 64; 62; 60 kD; Observed band size: 65 kD)

STORAGE

Store at 4°C short term. For long term storage, store at -20°C, avoiding freeze/thaw cycles.

NOTE

For Research Use Only. Not for diagnostic, therapeutics, prophylactic or in vivo use.