

**DATASHEET**
**KIM1 Rabbit Polyclonal Antibody**
**CAT. NO. APA12234**
**KEY FEATURES**

Target	KIM1	Source / Host	Rabbit
Reactivity	Human, Mouse	Clonality	Polyclonal
Applications	WB	Conjugation	Unconjugated
Form / Buffer	Liquid in 0.42% Potassium phosphate, 0.87% Sodium chloride, pH 7.3, 30% glycerol, and 0.01% sodium azide.		Storage at -20°C

**BACKGROUND**

Phosphatidylserine receptor that plays an important functional role in regulatory B-cell homeostasis including generation, expansion and suppressor functions . As P-selectin/SELPLG ligand, plays a specialized role in activated but not naive T-cell trafficking during inflammatory responses . Controls thereby T-cell accumulation in the inflamed central nervous system (CNS) and the induction of autoimmune disease . Also regulates expression of various anti-inflammatory cytokines and co-inhibitory ligands including IL10 . Acts as a regulator of T-cell proliferation . Confers phagocytic ability on injured kidney epithelial cells, allowing them to bind to and internalize apoptotic bodies and necrotic debris following kidney injury .

**APPLICATION**

To ensure optimal assay performance, AREX recommends conducting reagent titration tailored to each testing system for optimal detection results.

WB	1:500 - 1:2000
----	----------------

\*Results are sample-specific. Please refer to your local assay conditions and test parameters for reference.

**PRODUCT OVERVIEW**

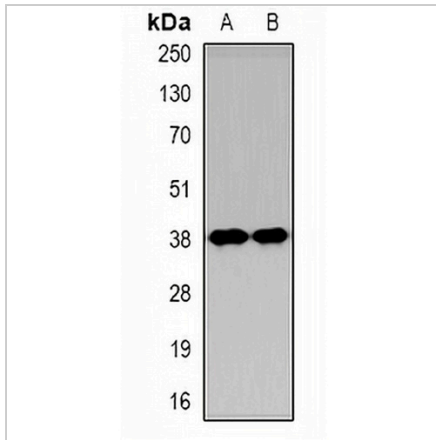
Description	Rabbit polyclonal antibody to KIM1
Specificity	Recognizes endogenous levels of KIM1 protein.
Antibody Type	Primary antibody
Immunogen	KLH-conjugated synthetic peptide encompassing a sequence within the N-term region of human KIM1. The exact sequence is proprietary.
Purification	The antibody was purified by immunogen affinity chromatography.
Molecular Weight	Predicted: 39 kD; Observed: 38 kD
Form/Buffer	Liquid in 0.42% Potassium phosphate, 0.87% Sodium chloride, pH 7.3, 30% glycerol, and 0.01% sodium azide.
Alternative Names	KIM1; TIM1; TIMD1; Hepatitis A virus cellular receptor 1; HAVcr-1; Kidney injury molecule 1; KIM-1; T-cell immunoglobulin and mucin domain-containing protein 1; TIMD-1; T-cell immunoglobulin mucin receptor 1; TIM; TIM-1; T-cell membrane protein 1
Gene Symbol	HAVCR1
Entrez Gene	26762(Human)
SwissProt	Q96D42(Human)

\*AREX continuously optimizes our products. Webpage content may not reflect the latest updates. For inquiries, please contact [info@arexbio.com](mailto:info@arexbio.com) or your local distributor.

\*Clone Number, Reactivity, Source/Host and Clonality can be found in the product name and Key Features section above.

**DATASHEET****KIM1 Rabbit Polyclonal Antibody**

CAT. NO. APA12234

**DATA**

Western blot analysis of KIM1 expression in HeLa (A), HEK293T (B) whole cell lysates.  
(Predicted band size: 39 kD; Observed band size: 38 kD)

**STORAGE**

Store at 4°C short term. For long term storage, store at -20°C, avoiding freeze/thaw cycles.

**NOTE**

For Research Use Only. Not for diagnostic, therapeutics, prophylactic or in vivo use.