

**DATASHEET**

**CD49f Rabbit Polyclonal Antibody**

CAT. NO. APA12240

**KEY FEATURES**

Target	CD49f	Source / Host	Rabbit
Reactivity	Human, Mouse	Clonality	Polyclonal
Applications	WB	Conjugation	Unconjugated
Form / Buffer	Liquid in 0.42% Potassium phosphate, 0.87% Sodium chloride, pH 7.3, 30% glycerol, and 0.01% sodium azide.		Storage at -20°C

**BACKGROUND**

Integrin alpha-6/beta-1 (ITGA6:ITGB1) is a receptor for laminin on platelets . Integrin alpha-6/beta-1 (ITGA6:ITGB1) is present in oocytes and is involved in sperm-egg fusion . Integrin alpha-6/beta-4 (ITGA6:ITGB4) is a receptor for laminin in epithelial cells and it plays a critical structural role in the hemidesmosome . ITGA6:ITGB4 binds to NRG1 (via EGF domain) and this binding is essential for NRG1-ERBB signaling is a receptor for laminin on platelets . Integrin alpha-6/beta-1 (ITGA6:ITGB1) is present in oocytes and is involved in sperm-egg fusion . Integrin alpha-6/beta-4 (ITGA6:ITGB4) is a receptor for laminin in epithelial cells and it plays a critical structural role in the hemidesmosome .

**APPLICATION**

To ensure optimal assay performance, AREX recommends conducting reagent titration tailored to each testing system for optimal detection results.

WB	1:500 - 1:2000
----	----------------

\*Results are sample-specific. Please refer to your local assay conditions and test parameters for reference.

**PRODUCT OVERVIEW**

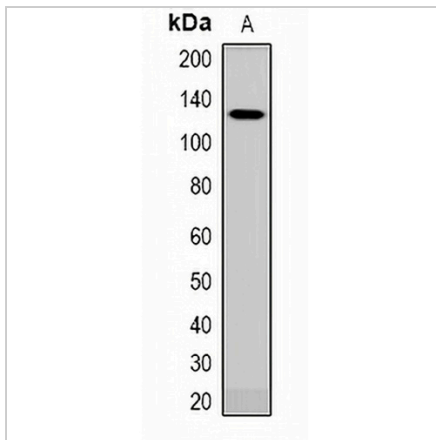
Description	Rabbit polyclonal antibody to CD49f
Specificity	Recognizes endogenous levels of CD49f protein.
Antibody Type	Primary antibody
Immunogen	KLH-conjugated synthetic peptide encompassing a sequence within the center region of human CD49f. The exact sequence is proprietary.
Purification	The antibody was purified by immunogen affinity chromatography.
Molecular Weight	Predicted: 126 kD; Observed: 125 kD
Form/Buffer	Liquid in 0.42% Potassium phosphate, 0.87% Sodium chloride, pH 7.3, 30% glycerol, and 0.01% sodium azide.
Alternative Names	Integrin alpha-6; CD49 antigen-like family member F; VLA-6; CD49f
Gene Symbol	ITGA6
Entrez Gene	3655(Human); 16403(Mouse)
SwissProt	P23229(Human); Q61739(Mouse)

\*AREX continuously optimizes our products. Webpage content may not reflect the latest updates. For inquiries, please contact [info@arexbio.com](mailto:info@arexbio.com) or your local distributor.

\*Clone Number, Reactivity, Source/Host and Clonality can be found in the product name and Key Features section above.

**DATASHEET****CD49f Rabbit Polyclonal Antibody**

CAT. NO. APA12240

**DATA**

Western blot analysis of CD49f expression in NIH3T3 (A) whole cell lysates. (Predicted band size: 126 kD; Observed band size: 125 kD)

**STORAGE**

Store at 4°C short term. For long term storage, store at -20°C, avoiding freeze/thaw cycles.

**NOTE**

For Research Use Only. Not for diagnostic, therapeutics, prophylactic or in vivo use.