

DATASHEET

CD93 Rabbit Polyclonal Antibody

CAT. NO. APA12243

KEY FEATURES

Target	CD93	Source / Host	Rabbit
Reactivity	Human	Clonality	Polyclonal
Applications	WB	Conjugation	Unconjugated
Form / Buffer	Liquid in 0.42% Potassium phosphate, 0.87% Sodium chloride, pH 7.3, 30% glycerol, and 0.01% sodium azide.		Storage at -20°C

BACKGROUND

Cell surface receptor that plays a role in various physiological processes including inflammation, phagocytosis, and cell adhesion. Plays a role in phagocytosis and enhances the uptake of apoptotic cells and immune complexes by acting as a receptor for defense collagens including surfactant protein A/SFTPA1, C1q, and mannose-binding lectin (MBL2). Plays a role in the regulation of endothelial cell function and adhesion by activating angiogenesis. Mechanistically, exerts its angiogenic function by associating with beta-dystroglycan, leading to SRC-dependent phosphorylation and subsequent recruitment of CBL. In turn, CBL provides a docking site for downstream signaling components, such as CRKL to enhance cell migration.

APPLICATION

To ensure optimal assay performance, AREX recommends conducting reagent titration tailored to each testing system for optimal detection results.

WB	1:500 - 1:2000
----	----------------

*Results are sample-specific. Please refer to your local assay conditions and test parameters for reference.

PRODUCT OVERVIEW

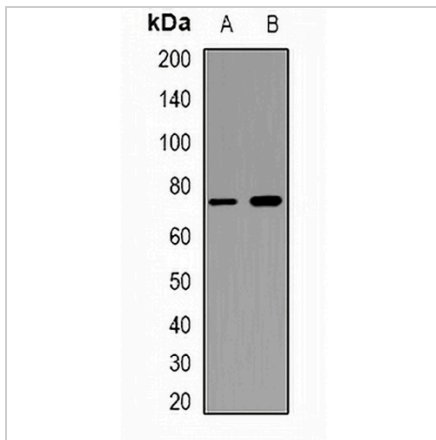
Description	Rabbit polyclonal antibody to CD93
Specificity	Recognizes endogenous levels of CD93 protein.
Antibody Type	Primary antibody
Immunogen	KLH-conjugated synthetic peptide encompassing a sequence within the center region of human CD93. The exact sequence is proprietary.
Purification	The antibody was purified by immunogen affinity chromatography.
Molecular Weight	Predicted: 68 kD; Observed: 68 kD
Form/Buffer	Liquid in 0.42% Potassium phosphate, 0.87% Sodium chloride, pH 7.3, 30% glycerol, and 0.01% sodium azide.
Alternative Names	C1QR1; MXRA4; Complement component C1q receptor; C1q/MBL/SPA receptor; C1qR; C1qR(p); C1qRp; CDw93; Complement component 1 q subcomponent receptor 1; Matrix-remodeling-associated protein 4; CD93
Gene Symbol	CD93
Entrez Gene	22918(Human)
SwissProt	Q9NPY3(Human)

*AREX continuously optimizes our products. Webpage content may not reflect the latest updates. For inquiries, please contact info@arexbio.com or your local distributor.

*Clone Number, Reactivity, Source/Host and Clonality can be found in the product name and Key Features section above.

DATASHEET**CD93 Rabbit Polyclonal Antibody**

CAT. NO. APA12243

DATA

Western blot analysis of CD93 expression in KB (A), THP1 (B) whole cell lysates. (Predicted band size: 68 kD; Observed band size: 68 kD)

STORAGE

Store at 4°C short term. For long term storage, store at -20°C, avoiding freeze/thaw cycles.

NOTE

For Research Use Only. Not for diagnostic, therapeutics, prophylactic or in vivo use.