

DATASHEET

CD299 Rabbit Polyclonal Antibody

CAT. NO. APA12250

KEY FEATURES

Target	CD299	Source / Host	Rabbit
Reactivity	Human, Mouse	Clonality	Polyclonal
Applications	WB	Conjugation	Unconjugated
Form / Buffer	Liquid in 0.42% Potassium phosphate, 0.87% Sodium chloride, pH 7.3, 30% glycerol, and 0.01% sodium azide.		Storage at-20°C

BACKGROUND

Probable pathogen-recognition receptor involved in peripheral immune surveillance in liver. May mediate the endocytosis of pathogens which are subsequently degraded in lysosomal compartments. Is a receptor for ICAM3, probably by binding to mannose-like carbohydrates.

APPLICATION

To ensure optimal assay performance, AREX recommends conducting reagent titration tailored to each testing system for optimal detection results.

WB	1:500 - 1:2000
----	----------------

*Results are sample-specific. Please refer to your local assay conditions and test parameters for reference.

PRODUCT OVERVIEW

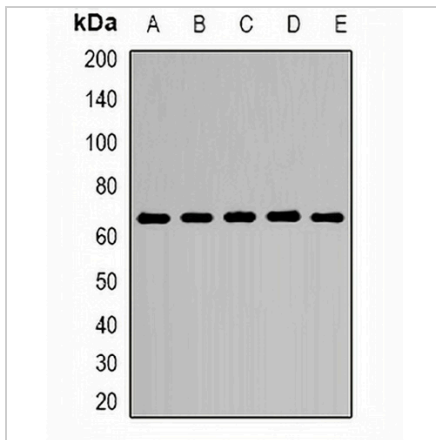
Description	Rabbit polyclonal antibody to CD299
Specificity	Recognizes endogenous levels of CD299 protein.
Antibody Type	Primary antibody
Immunogen	KLH-conjugated synthetic peptide encompassing a sequence within the center region of human CD299. The exact sequence is proprietary.
Purification	The antibody was purified by immunogen affinity chromatography.
Molecular Weight	Predicted: 45 kD; Observed: 68 kD
Form/Buffer	Liquid in 0.42% Potassium phosphate, 0.87% Sodium chloride, pH 7.3, 30% glycerol, and 0.01% sodium azide.
Alternative Names	CD209L; CD209L1; CD299; C-type lectin domain family 4 member M; CD209 antigen-like protein 1; DC-SIGN-related protein; DC-SIGNR; Dendritic cell-specific ICAM-3-grabbing non-integrin 2; DC-SIGN2; Liver/lymph node-specific ICAM-3-grabbing non-integrin; L-SIGN; CD299
Gene Symbol	CLEC4M
Entrez Gene	10332(Human)
SwissProt	Q9H2X3(Human)

*AREX continuously optimizes our products. Webpage content may not reflect the latest updates. For inquiries, please contact info@arexbio.com or your local distributor.

*Clone Number, Reactivity, Source/Host and Clonality can be found in the product name and Key Features section above.

DATASHEET**CD299 Rabbit Polyclonal Antibody**

CAT. NO. APA12250

DATA

Western blot analysis of CD299 expression in HEK293T (A), HeLa (B), NIH3T3 (C), mouse lung (D), mouse heart (E) whole cell lysates. (Predicted band size: 45 kD; Observed band size: 68 kD)

STORAGE

Store at 4°C short term. For long term storage, store at -20°C, avoiding freeze/thaw cycles.

NOTE

For Research Use Only. Not for diagnostic, therapeutics, prophylactic or in vivo use.