

## DATASHEET

# IL-19 Rabbit Polyclonal Antibody

CAT. NO. APA12252

### KEY FEATURES

Target	IL-19	Source / Host	Rabbit
Reactivity	Human, Rat	Clonality	Polyclonal
Applications	WB, IHC	Conjugation	Unconjugated
Form / Buffer	Liquid in 0.42% Potassium phosphate, 0.87% Sodium chloride, pH 7.3, 30% glycerol, and 0.01% sodium azide.		Storage at -20°C

### BACKGROUND

Cytokine that functions as an anti-inflammatory and proangiogenic factor . Polarizes adaptive immunity to an anti-inflammatory phenotype through induction of T-helper 2 responses by both down-regulation of IFN-gamma and up-regulation of IL4 and IL13 . Produced by osteocytes, stimulates granulopoiesis and neutrophil formation . Exerts its biological effect through a receptor complex consisting of a heterodimer of IL20RA and IL20RB . In turn, activates the Janus kinase (JAK) and signal transducer and activator of transcription (STAT) pathway, and importantly, STAT3 .

### APPLICATION

To ensure optimal assay performance, AREX recommends conducting reagent titration tailored to each testing system for optimal detection results.

WB	1:500 - 1:2000
IHC	1:50 - 1:200

\*Results are sample-specific. Please refer to your local assay conditions and test parameters for reference.

### PRODUCT OVERVIEW

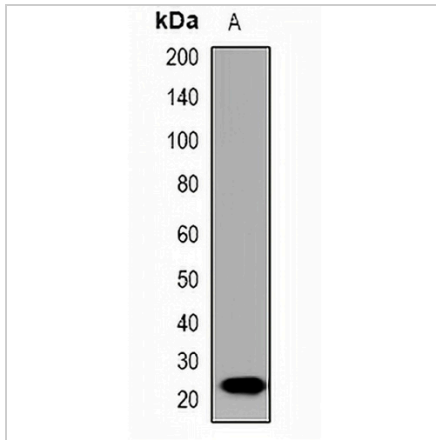
Description	Rabbit polyclonal antibody to IL-19
Specificity	Recognizes endogenous levels of IL-19 protein.
Antibody Type	Primary antibody
Immunogen	KLH-conjugated synthetic peptide encompassing a sequence within the center region of human IL-19. The exact sequence is proprietary.
Purification	The antibody was purified by immunogen affinity chromatography.
Molecular Weight	Predicted: 20 kD; Observed: 24 kD
Form/Buffer	Liquid in 0.42% Potassium phosphate, 0.87% Sodium chloride, pH 7.3, 30% glycerol, and 0.01% sodium azide.
Alternative Names	ZMDA1; Interleukin-19; IL-19; Melanoma differentiation-associated protein-like protein; NG.1
Gene Symbol	IL19
Entrez Gene	29949(Human)
SwissProt	Q9UHD0(Human)

\*AREX continuously optimizes our products. Webpage content may not reflect the latest updates. For inquiries, please contact [info@arexbio.com](mailto:info@arexbio.com) or your local distributor.

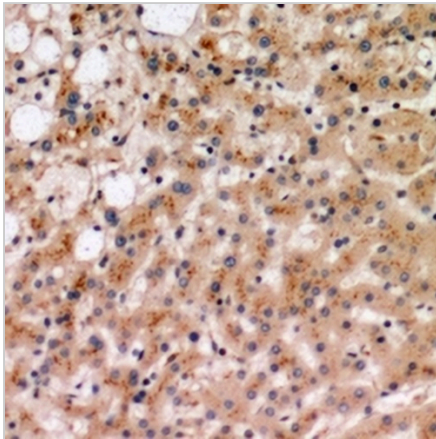
\*Clone Number, Reactivity, Source/Host and Clonality can be found in the product name and Key Features section above.

**DATASHEET****IL-19 Rabbit Polyclonal Antibody**

CAT. NO. APA12252

**DATA**

Western blot analysis of IL-19 expression in rat brain (A) whole cell lysates. (Predicted band size: 20 kD; Observed band size: 24 kD)



Immunohistochemical analysis of IL-19 staining in human liver formalin fixed paraffin embedded tissue section. The section was pre-treated using heat mediated antigen retrieval with sodium citrate buffer (pH 6.0). The section was then incubated with the antibody at room temperature and detected using an HRP conjugated compact polymer system. DAB was used as the chromogen. The section was then counterstained with haematoxylin and mounted with DPX.

**STORAGE**

Store at 4°C short term. For long term storage, store at -20°C, avoiding freeze/thaw cycles.

**NOTE**

For Research Use Only. Not for diagnostic, therapeutics, prophylactic or in vivo use.