

**DATASHEET**

**BMP10 Rabbit Polyclonal Antibody**

CAT. NO. APA12255

**KEY FEATURES**

|               |   |               |                     |
|---------------|---|---------------|---------------------|
| Target        | BMP10   | Source / Host | Rabbit              |
| Reactivity    | Human, Mouse, Rat   | Clonality     | Polyclonal          |
| Applications  | WB  | Conjugation   | Unconjugated        |
| Form / Buffer | Liquid in 0.42% Potassium phosphate, 0.87% Sodium chloride, pH 7.3, 30% glycerol, and 0.01% sodium azide. |               | Storage<br>at -20°C |

**BACKGROUND**

Required for maintaining the proliferative activity of embryonic cardiomyocytes by preventing premature activation of the negative cell cycle regulator CDKN1C/p57KIP and maintaining the required expression levels of cardiogenic factors such as MEF2C and NKX2-5. Acts as a ligand for ACVRL1/ALK1, BMPR1A/ALK3 and BMPR1B/ALK6, leading to activation of SMAD1, SMAD5 and SMAD8 transcription factors. Inhibits endothelial cell migration and growth. May reduce cell migration and cell matrix adhesion in breast cancer cell lines.

**APPLICATION**

To ensure optimal assay performance, AREX recommends conducting reagent titration tailored to each testing system for optimal detection results.

|    |                |
|----|----------------|
| WB | 1:500 - 1:2000 |
|----|----------------|

\*Results are sample-specific. Please refer to your local assay conditions and test parameters for reference.

**PRODUCT OVERVIEW**

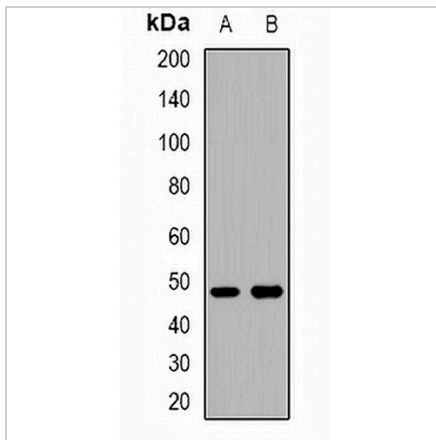
|                   |  |
|-------------------|--|
| Description       | Rabbit polyclonal antibody to BMP10  |
| Specificity       | Recognizes endogenous levels of BMP10 protein.   |
| Antibody Type     | Primary antibody   |
| Immunogen         | KLH-conjugated synthetic peptide encompassing a sequence within the C-term region of human BMP10. The exact sequence is proprietary. |
| Purification      | The antibody was purified by immunogen affinity chromatography.  |
| Molecular Weight  | Predicted: 48 kD; Observed: 48 kD  |
| Form/Buffer       | Liquid in 0.42% Potassium phosphate, 0.87% Sodium chloride, pH 7.3, 30% glycerol, and 0.01% sodium azide.                            |
| Alternative Names | Bone morphogenetic protein 10; BMP-10  |
| Gene Symbol       | BMP10  |
| Entrez Gene       | 27302(Human); 12154(Mouse); 500245(Rat)  |
| SwissProt         | O95393(Human); Q9R229(Mouse); Q4AEG6(Rat)  |

\*AREX continuously optimizes our products. Webpage content may not reflect the latest updates. For inquiries, please contact [info@arexbio.com](mailto:info@arexbio.com) or your local distributor.

\*Clone Number, Reactivity, Source/Host and Clonality can be found in the product name and Key Features section above.

**DATASHEET****BMP10 Rabbit Polyclonal Antibody**

CAT. NO. APA12255

**DATA**

Western blot analysis of BMP10 expression in mouse lung (A), mouse brain (B) whole cell lysates. (Predicted band size: 48 kD; Observed band size: 48 kD)

**STORAGE**

Store at 4°C short term. For long term storage, store at -20°C, avoiding freeze/thaw cycles.

**NOTE**

For Research Use Only. Not for diagnostic, therapeutics, prophylactic or in vivo use.