

**DATASHEET**

**TLE1/2/3/4 Rabbit Polyclonal Antibody**

CAT. NO. APA12261

**KEY FEATURES**

|               |                                                                                                           |               |                     |
|---------------|-----------------------------------------------------------------------------------------------------------|---------------|---------------------|
| Target        | TLE1/2/3/4                                                                                                | Source / Host | Rabbit              |
| Reactivity    | Human, Mouse, Rat, Zebrafish                                                                              | Clonality     | Polyclonal          |
| Applications  | WB                                                                                                        | Conjugation   | Unconjugated        |
| Form / Buffer | Liquid in 0.42% Potassium phosphate, 0.87% Sodium chloride, pH 7.3, 30% glycerol, and 0.01% sodium azide. |               | Storage<br>at -20°C |

**BACKGROUND**

Transcriptional corepressor that binds to a number of transcription factors. Inhibits NF-kappa-B-regulated gene expression. Inhibits the transcriptional activation mediated by FOXA2, and by CTNNB1 and TCF family members in Wnt signaling. Enhances FOXG1/BF-1- and HES1-mediated transcriptional repression. The effects of full-length TLE family members may be modulated by association with dominant-negative AES. Unusual function as coactivator for ESRRG.

**APPLICATION**

To ensure optimal assay performance, AREX recommends conducting reagent titration tailored to each testing system for optimal detection results.

|    |                |
|----|----------------|
| WB | 1:500 - 1:2000 |
|----|----------------|

\*Results are sample-specific. Please refer to your local assay conditions and test parameters for reference.

**PRODUCT OVERVIEW**

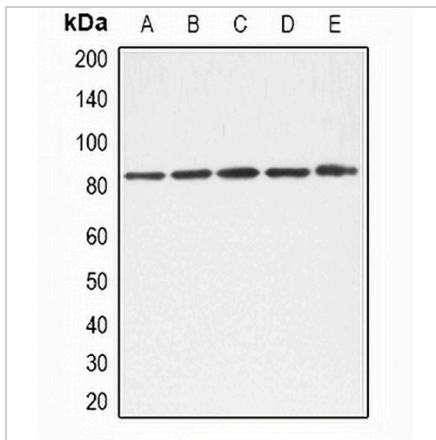
|                   |                                                                                                                                                                                                                                                                                                                                                            |
|-------------------|------------------------------------------------------------------------------------------------------------------------------------------------------------------------------------------------------------------------------------------------------------------------------------------------------------------------------------------------------------|
| Description       | Rabbit polyclonal antibody to TLE1/2/3/4                                                                                                                                                                                                                                                                                                                   |
| Specificity       | Recognizes endogenous levels of TLE1/2/3/4 protein.                                                                                                                                                                                                                                                                                                        |
| Antibody Type     | Primary antibody                                                                                                                                                                                                                                                                                                                                           |
| Immunogen         | KLH-conjugated synthetic peptide encompassing a sequence within the C-term region of human TLE1/2/3/4. The exact sequence is proprietary.                                                                                                                                                                                                                  |
| Purification      | The antibody was purified by immunogen affinity chromatography.                                                                                                                                                                                                                                                                                            |
| Molecular Weight  | Predicted: 83; Observed: 82 kD                                                                                                                                                                                                                                                                                                                             |
| Form/Buffer       | Liquid in 0.42% Potassium phosphate, 0.87% Sodium chloride, pH 7.3, 30% glycerol, and 0.01% sodium azide.                                                                                                                                                                                                                                                  |
| Alternative Names | TLE1; Transducin-like enhancer protein 1; E(Sp1) homolog; Enhancer of split groucho-like protein 1; ESG1; TLE2; Transducin-like enhancer protein 2; Enhancer of split groucho-like protein 2; ESG2; TLE3; KIAA1547; Transducin-like enhancer protein 3; Enhancer of split groucho-like protein 3; ESG3; TLE4; KIAA1261; Transducin-like enhancer protein 4 |
| Gene Symbol       | TLE1; TLE2; TLE3; TLE4                                                                                                                                                                                                                                                                                                                                     |
| Entrez Gene       | 7088; 7089; 7090; 7091(Human); 21885; 21886; 21887; 21888(Mouse); 84424; 25565(Rat)                                                                                                                                                                                                                                                                        |
| SwissProt         | Q04724; Q04725; Q04726; Q04727(Human); Q62440; Q9WVB2; Q08122; Q62441(Mouse); Q9JIT3; Q07141(Rat)                                                                                                                                                                                                                                                          |

\*AREX continuously optimizes our products. Webpage content may not reflect the latest updates. For inquiries, please contact [info@arexbio.com](mailto:info@arexbio.com) or your local distributor.

\*Clone Number, Reactivity, Source/Host and Clonality can be found in the product name and Key Features section above.

**DATASHEET****TLE1/2/3/4 Rabbit Polyclonal Antibody**

CAT. NO. APA12261

**DATA**

Western blot analysis of TLE1/2/3/4 expression in A549 (A), K562 (B), HeLa (C), NIH3T3 (D), mouse liver (E) whole cell lysates. (Predicted band size: 83; 79 kD; Observed band size: 82 kD)

**STORAGE**

Store at 4°C short term. For long term storage, store at -20°C, avoiding freeze/thaw cycles.

**NOTE**

For Research Use Only. Not for diagnostic, therapeutics, prophylactic or in vivo use.