

DATASHEET

HSP72 Rabbit Polyclonal Antibody

CAT. NO. APA12262

KEY FEATURES

| | | | |
|---------------|---|---------------|---------------------|
| Target | HSP72 | Source / Host | Rabbit |
| Reactivity | Human, Mouse, Bovine, Dog, Pig | Clonality | Polyclonal |
| Applications | WB | Conjugation | Unconjugated |
| Form / Buffer | Liquid in 0.42% Potassium phosphate, 0.87% Sodium chloride, pH 7.3, 30% glycerol, and 0.01% sodium azide. | | Storage at -20°C |

BACKGROUND

Molecular chaperone implicated in a wide variety of cellular processes, including protection of the proteome from stress, folding and transport of newly synthesized polypeptides, activation of proteolysis of misfolded proteins and the formation and dissociation of protein complexes. Plays a pivotal role in the protein quality control system, ensuring the correct folding of proteins, the re-folding of misfolded proteins and controlling the targeting of proteins for subsequent degradation. This is achieved through cycles of ATP binding, ATP hydrolysis and ADP release, mediated by co-chaperones.

APPLICATION

To ensure optimal assay performance, AREX recommends conducting reagent titration tailored to each testing system for optimal detection results.

| | |
|----|----------------|
| WB | 1:500 - 1:2000 |
|----|----------------|

*Results are sample-specific. Please refer to your local assay conditions and test parameters for reference.

PRODUCT OVERVIEW

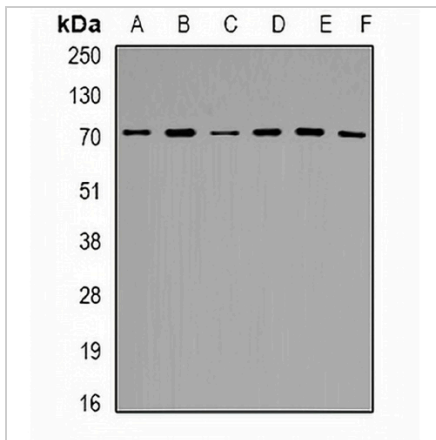
| | |
|-------------------|--|
| Description | Rabbit polyclonal antibody to HSP72 |
| Specificity | Recognizes endogenous levels of HSP72 protein. |
| Antibody Type | Primary antibody |
| Immunogen | KLH-conjugated synthetic peptide encompassing a sequence within the C-term region of human HSP72. The exact sequence is proprietary. |
| Purification | The antibody was purified by immunogen affinity chromatography. |
| Molecular Weight | Predicted: 70 kD; Observed: 70 kD |
| Form/Buffer | Liquid in 0.42% Potassium phosphate, 0.87% Sodium chloride, pH 7.3, 30% glycerol, and 0.01% sodium azide. |
| Alternative Names | HSPA1; HSX70; Heat shock 70 kDa protein 1A/1B; Heat shock 70 kDa protein 1/2; HSP70-1/HSP70-2; HSP70.1/HSP70.2 |
| Gene Symbol | HSPA1A; HSPA1B |
| Entrez Gene | 3303; 3304(Human) |
| SwissProt | P0DMV8; P0DMV9(Human) |

*AREX continuously optimizes our products. Webpage content may not reflect the latest updates. For inquiries, please contact info@arexbio.com or your local distributor.

*Clone Number, Reactivity, Source/Host and Clonality can be found in the product name and Key Features section above.

DATASHEET**HSP72 Rabbit Polyclonal Antibody**

CAT. NO. APA12262

DATA

Western blot analysis of HSP72 expression in HeLa (A), SHSY5Y (B), mouse kidney (C), mouse heart (D), mouse brain (E), mouse lung (F) whole cell lysates. (Predicted band size: 70 kD; Observed band size: 70 kD)

STORAGE

Store at 4°C short term. For long term storage, store at -20°C, avoiding freeze/thaw cycles.

NOTE

For Research Use Only. Not for diagnostic, therapeutics, prophylactic or in vivo use.