

DATASHEET

Perforin 1 Rabbit Polyclonal Antibody

CAT. NO. APA12271

KEY FEATURES

Target	Perforin 1	Source / Host	Rabbit
Reactivity	Human	Clonality	Polyclonal
Applications	WB, IHC	Conjugation	Unconjugated
Form / Buffer	Liquid in 0.42% Potassium phosphate, 0.87% Sodium chloride, pH 7.3, 30% glycerol, and 0.01% sodium azide.		Storage at -20°C

BACKGROUND

Pore-forming protein that plays a key role in granzyme-mediated programmed cell death, and in defense against virus-infected or neoplastic cells . Plays an important role in killing other cells that are recognized as non-self by the immune system, e.g. in transplant rejection or some forms of autoimmune disease . Can insert into the membrane of target cells in its calcium-bound form, oligomerize and form large pores . Promotes cytolysis and apoptosis of target cells by mediating the passage and uptake of cytotoxic granzymes . Facilitates the delivery of cationic cargo protein, while anionic or neural proteins are not delivered efficiently . Perforin pores allow the release of mature caspase-7 (CASP7) into the extracellular milieu .

APPLICATION

To ensure optimal assay performance, AREX recommends conducting reagent titration tailored to each testing system for optimal detection results.

WB	1:500 - 1:2000
IHC	1:50 - 1:200

*Results are sample-specific. Please refer to your local assay conditions and test parameters for reference.

PRODUCT OVERVIEW

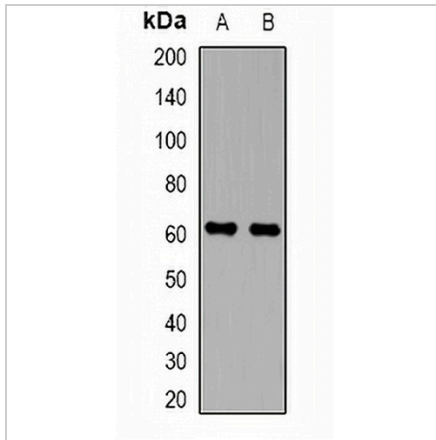
Description	Rabbit polyclonal antibody to Perforin 1
Specificity	Recognizes endogenous levels of Perforin 1 protein.
Antibody Type	Primary antibody
Immunogen	KLH-conjugated synthetic peptide encompassing a sequence within the C-term region of human Perforin 1. The exact sequence is proprietary.
Purification	The antibody was purified by immunogen affinity chromatography.
Molecular Weight	Predicted: 61 kD; Observed: 61 kD
Form/Buffer	Liquid in 0.42% Potassium phosphate, 0.87% Sodium chloride, pH 7.3, 30% glycerol, and 0.01% sodium azide.
Alternative Names	PPF; Perforin-1; P1; Cytolysin; Lymphocyte pore-forming protein; PFP
Gene Symbol	PRF1
Entrez Gene	5551(Human)
SwissProt	P14222(Human)

*AREX continuously optimizes our products. Webpage content may not reflect the latest updates. For inquiries, please contact info@arexbio.com or your local distributor.

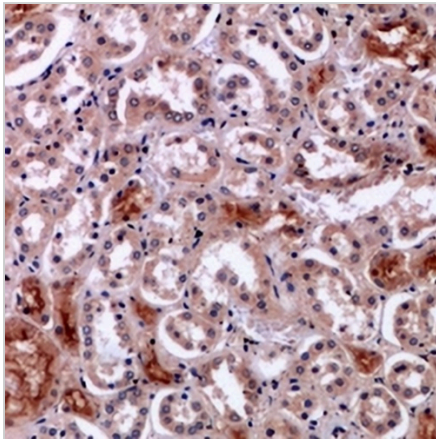
*Clone Number, Reactivity, Source/Host and Clonality can be found in the product name and Key Features section above.

DATASHEET**Perforin 1 Rabbit Polyclonal Antibody**

CAT. NO. APA12271

DATA

Western blot analysis of Perforin 1 expression in HeLa (A), Jurkat (B) whole cell lysates. (Predicted band size: 61 kD; Observed band size: 61 kD)



Immunohistochemical analysis of Perforin 1 staining in human kidney formalin fixed paraffin embedded tissue section. The section was pre-treated using heat mediated antigen retrieval with sodium citrate buffer (pH 6.0). The section was then incubated with the antibody at room temperature and detected using an HRP conjugated compact polymer system. DAB was used as the chromogen. The section was then counterstained with haematoxylin and mounted with DPX.

STORAGE

Store at 4°C short term. For long term storage, store at -20°C, avoiding freeze/thaw cycles.

NOTE

For Research Use Only. Not for diagnostic, therapeutics, prophylactic or in vivo use.