

DATASHEET

Cactin Rabbit Polyclonal Antibody

CAT. NO. APA12298

KEY FEATURES

Target	Cactin	Source / Host	Rabbit
Reactivity	Human, Mouse, Zebrafish	Clonality	Polyclonal
Applications	WB	Conjugation	Unconjugated
Form / Buffer	Liquid in 0.42% Potassium phosphate, 0.87% Sodium chloride, pH 7.3, 30% glycerol, and 0.01% sodium azide.		Storage at -20°C

BACKGROUND

Plays a role in pre-mRNA splicing by facilitating excision of a subset of introns . Required for the splicing of CDCA5/Sororin, a regulator of sister chromatid cohesion . Involved in the regulation of innate immune response . Acts as a negative regulator of Toll-like receptor, interferon-regulatory factor (IRF) and canonical NF-kappa-B signaling pathways . Contributes to the regulation of transcriptional activation of NF-kappa-B target genes in response to endogenous pro-inflammatory stimuli .

APPLICATION

To ensure optimal assay performance, AREX recommends conducting reagent titration tailored to each testing system for optimal detection results.

WB	1:500 - 1:2000
----	----------------

*Results are sample-specific. Please refer to your local assay conditions and test parameters for reference.

PRODUCT OVERVIEW

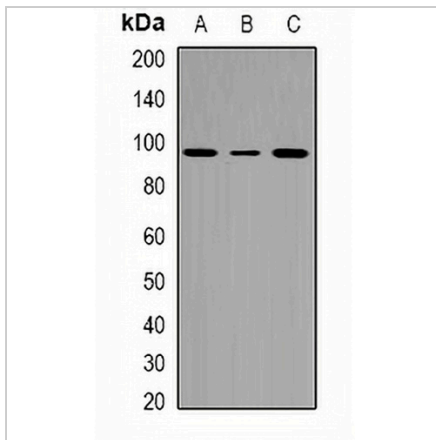
Description	Rabbit polyclonal antibody to Cactin
Specificity	Recognizes endogenous levels of Cactin protein.
Antibody Type	Primary antibody
Immunogen	KLH-conjugated synthetic peptide encompassing a sequence within the center region of human Cactin. The exact sequence is proprietary.
Purification	The antibody was purified by immunogen affinity chromatography.
Molecular Weight	Predicted: 88 kD; Observed: 95 kD
Form/Buffer	Liquid in 0.42% Potassium phosphate, 0.87% Sodium chloride, pH 7.3, 30% glycerol, and 0.01% sodium azide.
Alternative Names	C19orf29; Cactin; Renal carcinoma antigen NY-REN-24
Gene Symbol	CACTIN
Entrez Gene	58509(Human); 70312(Mouse)
SwissProt	Q8WUQ7(Human); Q9CS00(Mouse)

*AREX continuously optimizes our products. Webpage content may not reflect the latest updates. For inquiries, please contact info@arexbio.com or your local distributor.

*Clone Number, Reactivity, Source/Host and Clonality can be found in the product name and Key Features section above.

DATASHEET**Cactin Rabbit Polyclonal Antibody**

CAT. NO. APA12298

DATA

Western blot analysis of Cactin expression in HepG2 (A), HeLa (B), Jurkat (C) whole cell lysates. (Predicted band size: 88 kD; Observed band size: 95 kD)

STORAGE

Store at 4°C short term. For long term storage, store at -20°C, avoiding freeze/thaw cycles.

NOTE

For Research Use Only. Not for diagnostic, therapeutics, prophylactic or in vivo use.