

**DATASHEET**

**Collagen 28 alpha 1 Rabbit Polyclonal Antibody**

CAT. NO. APA12301

**KEY FEATURES**

Target	Collagen 28 alpha 1	Source / Host	Rabbit
Reactivity	Human, Mouse	Clonality	Polyclonal
Applications	WB	Conjugation	Unconjugated
Form / Buffer	Liquid in 0.42% Potassium phosphate, 0.87% Sodium chloride, pH 7.3, 30% glycerol, and 0.01% sodium azide.	Storage	at-20°C

**BACKGROUND**

May act as a cell-binding protein.

**APPLICATION**

To ensure optimal assay performance, AREX recommends conducting reagent titration tailored to each testing system for optimal detection results.

WB	1:500 - 1:2000
----	----------------

\*Results are sample-specific. Please refer to your local assay conditions and test parameters for reference.

**PRODUCT OVERVIEW**

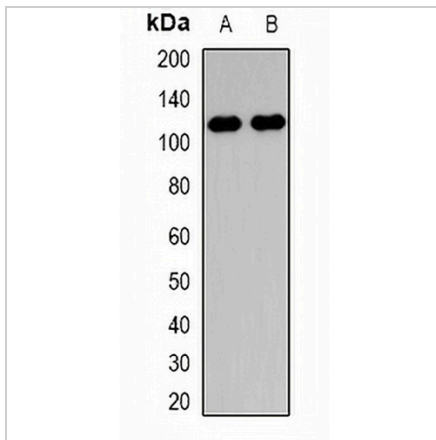
Description	Rabbit polyclonal antibody to Collagen 28 alpha 1
Specificity	Recognizes endogenous levels of Collagen 28 alpha 1 protein.
Antibody Type	Primary antibody
Immunogen	KLH-conjugated synthetic peptide encompassing a sequence within the N-term region of human Collagen 28 alpha 1. The exact sequence is proprietary.
Purification	The antibody was purified by immunogen affinity chromatography.
Molecular Weight	Predicted: 116 kD; Observed: 116 kD
Form/Buffer	Liquid in 0.42% Potassium phosphate, 0.87% Sodium chloride, pH 7.3, 30% glycerol, and 0.01% sodium azide.
Alternative Names	COL28; Collagen alpha-1(XXVIII) chain
Gene Symbol	COL28A1
Entrez Gene	340267(Human); 213945(Mouse)
SwissProt	Q2UY09(Human); Q2UY11(Mouse)

\*AREX continuously optimizes our products. Webpage content may not reflect the latest updates. For inquiries, please contact [info@arexbio.com](mailto:info@arexbio.com) or your local distributor.

\*Clone Number, Reactivity, Source/Host and Clonality can be found in the product name and Key Features section above.

**DATASHEET****Collagen 28 alpha 1 Rabbit Polyclonal Antibody**

CAT. NO. APA12301

**DATA**

Western blot analysis of Collagen 28 alpha 1 expression in HepG2 (A), NIH3T3 (B) whole cell lysates. (Predicted band size: 116 kD; Observed band size: 116 kD)

**STORAGE**

Store at 4°C short term. For long term storage, store at -20°C, avoiding freeze/thaw cycles.

**NOTE**

For Research Use Only. Not for diagnostic, therapeutics, prophylactic or in vivo use.