

**DATASHEET**

**CREB3 Rabbit Polyclonal Antibody**

CAT. NO. APA12305

**KEY FEATURES**

Target	CREB3	Source / Host	Rabbit
Reactivity	Human, Mouse, Bovine	Clonality	Polyclonal
Applications	WB	Conjugation	Unconjugated
Form / Buffer	Liquid in 0.42% Potassium phosphate, 0.87% Sodium chloride, pH 7.3, 30% glycerol, and 0.01% sodium azide.		Storage at -20°C

**BACKGROUND**

Endoplasmic reticulum (ER)-bound sequence-specific transcription factor that directly binds DNA and activates transcription . Plays a role in the unfolded protein response (UPR), promoting cell survival versus ER stress-induced apoptotic cell death . Also involved in cell proliferation, migration and differentiation, tumor suppression and inflammatory gene expression. Acts as a positive regulator of LKN-1/CCL15-induced chemotaxis signaling of leukocyte cell migration . Associates with chromatin to the HERPUD1 promoter . Also induces transcriptional activation of chemokine receptors .

**APPLICATION**

To ensure optimal assay performance, AREX recommends conducting reagent titration tailored to each testing system for optimal detection results.

WB	1:500 - 1:2000
----	----------------

\*Results are sample-specific. Please refer to your local assay conditions and test parameters for reference.

**PRODUCT OVERVIEW**

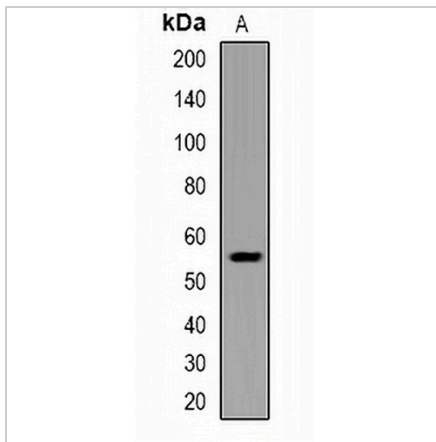
Description	Rabbit polyclonal antibody to CREB3
Specificity	Recognizes endogenous levels of CREB3 protein.
Antibody Type	Primary antibody
Immunogen	KLH-conjugated synthetic peptide encompassing a sequence within the center region of human CREB3. The exact sequence is proprietary.
Purification	The antibody was purified by immunogen affinity chromatography.
Molecular Weight	Predicted: 41 kD; Observed: 55 kD
Form/Buffer	Liquid in 0.42% Potassium phosphate, 0.87% Sodium chloride, pH 7.3, 30% glycerol, and 0.01% sodium azide.
Alternative Names	LZIP; Cyclic AMP-responsive element-binding protein 3; CREB-3; cAMP-responsive element-binding protein 3; Leucine zipper protein; Luman; Transcription factor LZIP-alpha
Gene Symbol	CREB3
Entrez Gene	10488(Human)
SwissProt	O43889(Human); Q61817(Mouse)

\*AREX continuously optimizes our products. Webpage content may not reflect the latest updates. For inquiries, please contact [info@arexbio.com](mailto:info@arexbio.com) or your local distributor.

\*Clone Number, Reactivity, Source/Host and Clonality can be found in the product name and Key Features section above.

**DATASHEET****CREB3 Rabbit Polyclonal Antibody**

CAT. NO. APA12305

**DATA**

Western blot analysis of CREB3 expression in NIH3T3 (A) whole cell lysates. (Predicted band size: 41 kD; Observed band size: 55 kD)

**STORAGE**

Store at 4°C short term. For long term storage, store at -20°C, avoiding freeze/thaw cycles.

**NOTE**

For Research Use Only. Not for diagnostic, therapeutics, prophylactic or in vivo use.