

**DATASHEET**

**SPFH1 Rabbit Polyclonal Antibody**

CAT. NO. APA12314

**KEY FEATURES**

Target	SPFH1	Source / Host	Rabbit
Reactivity	Human, Mouse, Rat, Bovine, Zebrafish	Clonality	Polyclonal
Applications	WB, IHC	Conjugation	Unconjugated
Form / Buffer	Liquid in 0.42% Potassium phosphate, 0.87% Sodium chloride, pH 7.3, 30% glycerol, and 0.01% sodium azide.		Storage at-20°C

**BACKGROUND**

Component of the ERLIN1/ERLIN2 complex which mediates the endoplasmic reticulum-associated degradation (ERAD) of inositol 1,4,5-trisphosphate receptors (IP3Rs). Involved in regulation of cellular cholesterol homeostasis by regulation the SREBP signaling pathway of inositol 1,4,5-trisphosphate receptors (IP3Rs). Involved in regulation of cellular cholesterol homeostasis by regulation the SREBP signaling pathway . Binds cholesterol and may promote ER retention of the SCAP-SREBF complex .

**APPLICATION**

To ensure optimal assay performance, AREX recommends conducting reagent titration tailored to each testing system for optimal detection results.

WB	1:500 - 1:2000
IHC	1:50 - 1:200

\*Results are sample-specific. Please refer to your local assay conditions and test parameters for reference.

**PRODUCT OVERVIEW**

Description	Rabbit polyclonal antibody to SPFH1
Specificity	Recognizes endogenous levels of SPFH1 protein.
Antibody Type	Primary antibody
Immunogen	KLH-conjugated synthetic peptide encompassing a sequence within the center region of human SPFH1. The exact sequence is proprietary.
Purification	The antibody was purified by immunogen affinity chromatography.
Molecular Weight	Predicted: 39; Observed: 38 kD
Form/Buffer	Liquid in 0.42% Potassium phosphate, 0.87% Sodium chloride, pH 7.3, 30% glycerol, and 0.01% sodium azide.
Alternative Names	ERLIN1; C10orf69; KE04; KEO4; SPFH1; Erlin-1; Endoplasmic reticulum lipid raft-associated protein 1; Protein KE04; Stomatin-prohibitin-flotillin-HflC/K domain-containing protein 1; SPFH domain-containing protein 1; ERLIN2; C8orf2; SPFH2; Erlin-2; Endoplasmic reticulum lipid raft-associated protein 2; Stomatin-prohibitin-flotillin-HflC/K domain-containing protein 2; SPFH domain-containing protein 2
Gene Symbol	ERLIN1; ERLIN2
Entrez Gene	10613; 11160(Human); 226144; 244373(Mouse); 290823(Rat)
SwissProt	O75477; O94905(Human); Q91X78; Q8BFZ9(Mouse); B5DEH2(Rat)

\*AREX continuously optimizes our products. Webpage content may not reflect the latest updates. For inquiries, please contact [info@arexbio.com](mailto:info@arexbio.com) or your local distributor.

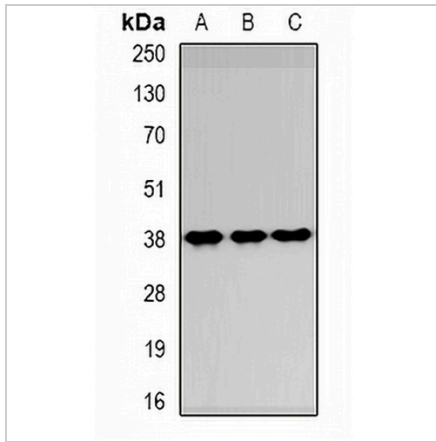
\*Clone Number, Reactivity, Source/Host and Clonality can be found in the product name and Key Features section above.

**DATASHEET**

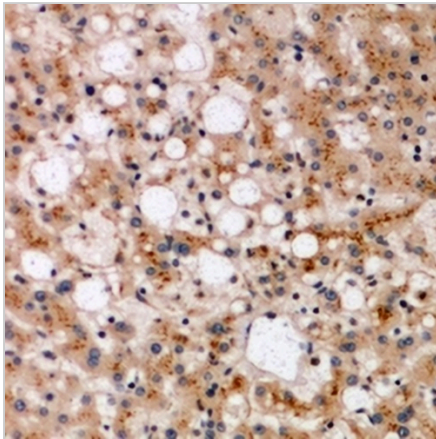
**SPFH1 Rabbit Polyclonal Antibody**

CAT. NO. APA12314

**DATA**



Western blot analysis of SPFH1 expression in HepG2 (A), NIH3T3 (B), HeLa (C) whole cell lysates. (Predicted band size: 39; 37 kD; Observed band size: 38 kD)



Immunohistochemical analysis of SPFH1 staining in human liver formalin fixed paraffin embedded tissue section. The section was pre-treated using heat mediated antigen retrieval with sodium citrate buffer (pH 6.0). The section was then incubated with the antibody at room temperature and detected using an HRP conjugated compact polymer system. DAB was used as the chromogen. The section was then counterstained with haematoxylin and mounted with DPX.

**STORAGE**

Store at 4°C short term. For long term storage, store at -20°C, avoiding freeze/thaw cycles.

**NOTE**

For Research Use Only. Not for diagnostic, therapeutics, prophylactic or in vivo use.