

**DATASHEET**

**Collagen 1 alpha 1/2 Rabbit Polyclonal Antibody**

CAT. NO. APA12319

**KEY FEATURES**

Target	Collagen 1 alpha 1/2	Source / Host	Rabbit
Reactivity	Human, Mouse, Rat	Clonality	Polyclonal
Applications	WB, IF/ICC	Conjugation	Unconjugated
Form / Buffer	Liquid in 0.42% Potassium phosphate, 0.87% Sodium chloride, pH 7.3, 30% glycerol, and 0.01% sodium azide.		Storage at -20°C

**BACKGROUND**

Type I collagen is a member of group I collagen (fibrillar forming collagen).

**APPLICATION**

To ensure optimal assay performance, AREX recommends conducting reagent titration tailored to each testing system for optimal detection results.

WB	1:500 - 1:2000
IF/ICC	1:50 - 1:200

\*Results are sample-specific. Please refer to your local assay conditions and test parameters for reference.

**PRODUCT OVERVIEW**

Description	Rabbit polyclonal antibody to Collagen 1 alpha 1/2
Specificity	Recognizes endogenous levels of Collagen 1 alpha 1/2 protein.
Antibody Type	Primary antibody
Immunogen	KLH-conjugated synthetic peptide encompassing a sequence within the center region of human Collagen 1 alpha 1/2. The exact sequence is proprietary.
Purification	The antibody was purified by immunogen affinity chromatography.
Molecular Weight	Predicted: 129; Observed: 130 kD
Form/Buffer	Liquid in 0.42% Potassium phosphate, 0.87% Sodium chloride, pH 7.3, 30% glycerol, and 0.01% sodium azide.
Alternative Names	Collagen alpha-1(I) chain; Alpha-1 type I collagen; Collagen alpha-2(I) chain; Alpha-2 type I collagen
Gene Symbol	COL1A1; COL1A2
Entrez Gene	1277; 1278(Human); 12843; 12842(Mouse); 84352; 29393(Rat)
SwissProt	P02452; P08123(Human); Q01149; P11087(Mouse); P02466; P02454(Rat)

\*AREX continuously optimizes our products. Webpage content may not reflect the latest updates. For inquiries, please contact [info@arexbio.com](mailto:info@arexbio.com) or your local distributor.

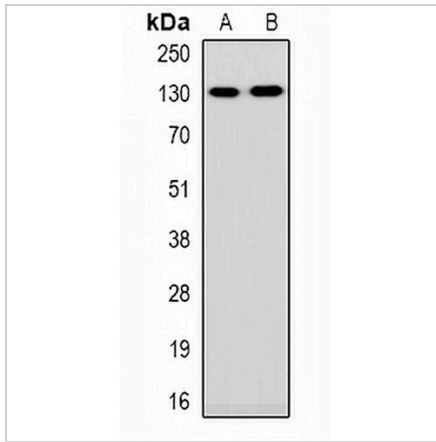
\*Clone Number, Reactivity, Source/Host and Clonality can be found in the product name and Key Features section above.

**DATASHEET**

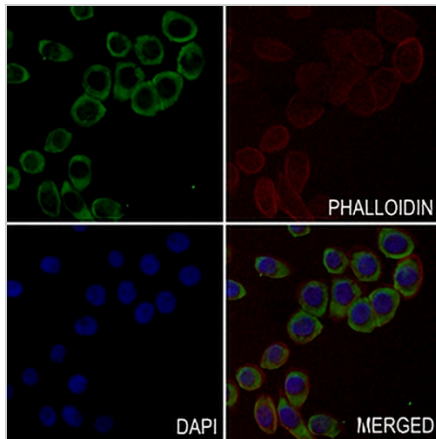
**Collagen 1 alpha 1/2 Rabbit Polyclonal Antibody**

CAT. NO. APA12319

**DATA**



Western blot analysis of Collagen 1 alpha 1/2 expression in HEK293T (A), HeLa (B) whole cell lysates. (Predicted band size: 129; 138 kD; Observed band size: 130 kD)



Immunofluorescent analysis of Collagen 1 alpha 1/2 staining in PCCL cells. Formalin-fixed cells were permeabilized with 0.1% Triton X-100 in TBS for 5-10 minutes and blocked with 3% BSA-PBS for 30 minutes at room temperature. Cells were probed with the primary antibody in 3% BSA-PBS and incubated overnight at 4 °C in a humidified chamber. Cells were washed with PBST and incubated with a AREX® Fluor 488 -conjugated secondary antibody (green) in PBS at room temperature in the dark. Phalloidin - AREX® Fluor 594 was used to stain Actin filaments (red). DAPI was used to stain the cell nuclei (blue).

**STORAGE**

Store at 4°C short term. For long term storage, store at -20°C, avoiding freeze/thaw cycles.

**NOTE**

For Research Use Only. Not for diagnostic, therapeutics, prophylactic or in vivo use.