

DATASHEET

GST-tag Rabbit Polyclonal Antibody

CAT. NO. APA12340

KEY FEATURES

| | | | |
|---------------|--|---------------|--------------|
| Target | GST-tag | Source / Host | Rabbit |
| Reactivity | | Clonality | Polyclonal |
| Applications | WB, IP | Conjugation | Unconjugated |
| Form / Buffer | Liquid in PBS, pH 7.3, 0.2% BSA, and 0.02% sodium azide. | Storage | at-20°C |

BACKGROUND

Glutathione S-transferase (GST) is a 26 kDa protein from *Schistosoma japonicum* used as a fusion tag for the expression and purification of recombinant proteins. GST-tagged proteins are purified by affinity chromatography using glutathione-conjugated resins. Anti-GST antibodies are used to detect GST fusion proteins in WB, ELISA, and pull-down assays.

APPLICATION

To ensure optimal assay performance, AREX recommends conducting reagent titration tailored to each testing system for optimal detection results.

| | |
|----|----------------|
| WB | 1:500 - 1:1000 |
| IP | 1:10 - 1:100 |

*Results are sample-specific. Please refer to your local assay conditions and test parameters for reference.

PRODUCT OVERVIEW

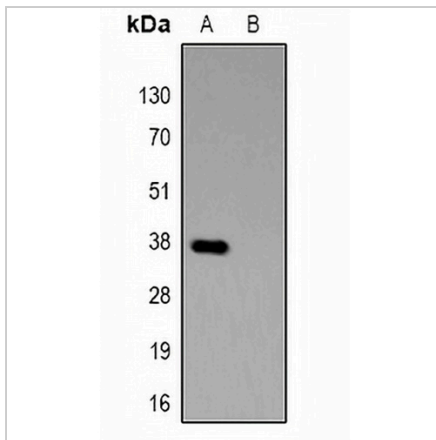
| | |
|---------------|--|
| Description | Rabbit polyclonal antibody to GST-tag |
| Specificity | Recognizes the GST-tag fused to the amino- or carboxy- termini of targeted proteins in transfected or transformed cells. |
| Antibody Type | Primary antibody,Tag |
| Immunogen | KLH-conjugated synthetic peptide SVDLMKKRENGDD. |
| Purification | The antibody was purified by immunogen affinity chromatography. |
| Form/Buffer | Liquid in PBS, pH 7.3, 0.2% BSA, and 0.02% sodium azide. |

*AREX continuously optimizes our products. Webpage content may not reflect the latest updates. For inquiries, please contact info@arexbio.com or your local distributor.

*Clone Number, Reactivity, Source/Host and Clonality can be found in the product name and Key Features section above.

DATASHEET**GST-tag Rabbit Polyclonal Antibody**

CAT. NO. APA12340

DATA

Western blot analysis of Anti-GST-tag Antibody against HEK293T cells transfected with vector overexpressing GST tag (A) and untransfected (B).

STORAGE

Store at 4°C short term. For long term storage, store at -20°C, avoiding freeze/thaw cycles.

NOTE

For Research Use Only. Not for diagnostic, therapeutics, prophylactic or in vivo use.