

DATASHEET

Glu-Glu-tag Rabbit Polyclonal Antibody

CAT. NO. APA12341

KEY FEATURES

Target	Glu-Glu-tag	Source / Host	Rabbit
Reactivity		Clonality	Polyclonal
Applications	WB, IP	Conjugation	Unconjugated
Form / Buffer	Liquid in PBS, pH 7.3, 0.2% BSA, and 0.02% sodium azide.	Storage	at-20°C

BACKGROUND

The Glu-Glu-tag (EE-tag) is a 9-amino-acid peptide (EEEEYMPME) derived from the C-terminal region of the polyoma middle T antigen. It is recognized by the Glu-Glu monoclonal antibody and used as a fusion tag for affinity purification and detection of recombinant proteins in WB and IP.

APPLICATION

To ensure optimal assay performance, AREX recommends conducting reagent titration tailored to each testing system for optimal detection results.

WB	1:500 - 1:1000
IP	1:10 - 1:100

*Results are sample-specific. Please refer to your local assay conditions and test parameters for reference.

PRODUCT OVERVIEW

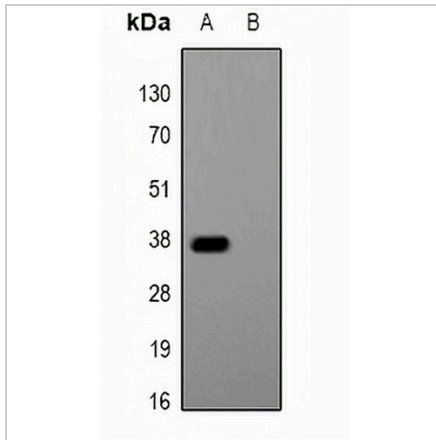
Description	Rabbit polyclonal antibody to Glu-Glu-tag
Specificity	Recognizes the Glu-Glu-tag fused to the amino- or carboxy- termini of targeted proteins in transfected or transformed cells.
Antibody Type	Primary antibody,Tag
Immunogen	KLH-conjugated synthetic peptide EYMPME.
Purification	The antibody was purified by immunogen affinity chromatography.
Form/Buffer	Liquid in PBS, pH 7.3, 0.2% BSA, and 0.02% sodium azide.

*AREX continuously optimizes our products. Webpage content may not reflect the latest updates. For inquiries, please contact info@arexbio.com or your local distributor.

*Clone Number, Reactivity, Source/Host and Clonality can be found in the product name and Key Features section above.

DATASHEET**Glu-Glu-tag Rabbit Polyclonal Antibody**

CAT. NO. APA12341

DATA

Western blot analysis of Anti-Glu-Glu-tag Antibody against HEK293T cells transfected with vector overexpressing Glu-Glu tag (A) and untransfected (B).

STORAGE

Store at 4°C short term. For long term storage, store at -20°C, avoiding freeze/thaw cycles.

NOTE

For Research Use Only. Not for diagnostic, therapeutics, prophylactic or in vivo use.