

DATASHEET

EYFP-tag Rabbit Polyclonal Antibody

CAT. NO. APA12346

KEY FEATURES

Target	EYFP-tag	Source / Host	Rabbit
Reactivity		Clonality	Polyclonal
Applications	WB	Conjugation	Unconjugated
Form / Buffer	Liquid in 0.42% Potassium phosphate, 0.87% Sodium chloride, pH 7.3, 30% glycerol, and 0.01% sodium azide.		Storage at-20°C

BACKGROUND

EYFP (Enhanced Yellow Fluorescent Protein) is a GFP variant with red-shifted excitation/emission maxima around 514/527 nm, commonly used in FRET pairs with ECFP. Anti-EYFP antibodies enable detection of EYFP fusion proteins by WB, IP, and IF.

APPLICATION

To ensure optimal assay performance, AREX recommends conducting reagent titration tailored to each testing system for optimal detection results.

WB	1:2000 - 1:5000
----	-----------------

*Results are sample-specific. Please refer to your local assay conditions and test parameters for reference.

PRODUCT OVERVIEW

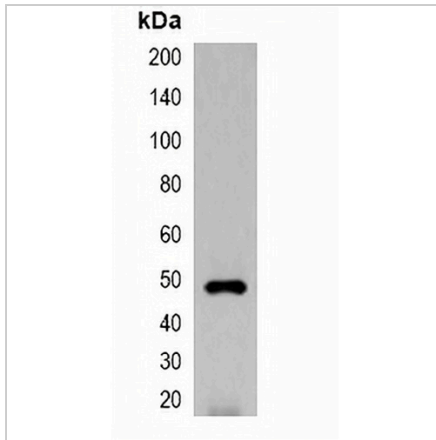
Description	Rabbit polyclonal antibody to EYFP-tag
Specificity	Recognizes EYFP and YFP tag fusion proteins.
Antibody Type	Primary antibody, Tag
Immunogen	Recombinant protein corresponding to EYFP-tag.
Purification	The antibody was purified by immunogen affinity chromatography.
Form/Buffer	Liquid in 0.42% Potassium phosphate, 0.87% Sodium chloride, pH 7.3, 30% glycerol, and 0.01% sodium azide.

*AREX continuously optimizes our products. Webpage content may not reflect the latest updates. For inquiries, please contact info@arexbio.com or your local distributor.

*Clone Number, Reactivity, Source/Host and Clonality can be found in the product name and Key Features section above.

DATASHEET**EYFP-tag Rabbit Polyclonal Antibody**

CAT. NO. APA12346

DATA

Western blot analysis of over-expressed EYFP-tagged protein in 293T cell lysate.

STORAGE

Store at 4°C short term. For long term storage, store at -20°C, avoiding freeze/thaw cycles.

NOTE

For Research Use Only. Not for diagnostic, therapeutics, prophylactic or in vivo use.