

DATASHEET

mStrawberry-tag Rabbit Polyclonal Antibody

CAT. NO. APA12353

KEY FEATURES

Target	mStrawberry-tag	Source / Host	Rabbit
Reactivity		Clonality	Polyclonal
Applications	WB	Conjugation	Unconjugated
Form / Buffer	Liquid in 0.42% Potassium phosphate, 0.87% Sodium chloride, pH 7.3, 30% glycerol, and 0.01% sodium azide.		Storage at-20°C

BACKGROUND

mStrawberry is a monomeric red fluorescent protein derived from DsRed with excitation/emission maxima around 574/596 nm. It is used as a fluorescent reporter for live-cell imaging and protein localization studies. Anti-mStrawberry antibodies enable detection by WB, IP, and IF.

APPLICATION

To ensure optimal assay performance, AREX recommends conducting reagent titration tailored to each testing system for optimal detection results.

WB	1:2000 - 1:5000
----	-----------------

*Results are sample-specific. Please refer to your local assay conditions and test parameters for reference.

PRODUCT OVERVIEW

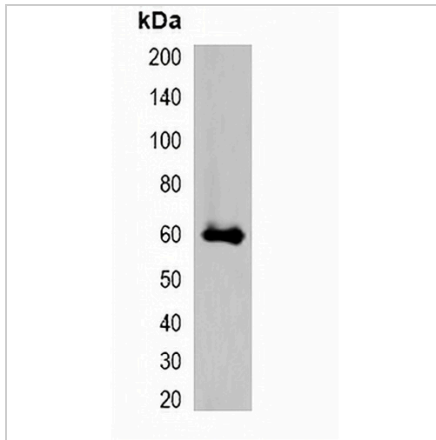
Description	Rabbit polyclonal antibody to mStrawberry-tag
Specificity	Recognizes mStrawberry and mStrawberry tag protein.
Antibody Type	Primary antibody,Tag
Immunogen	Recombinant protein corresponding to mStrawberry-tag.
Purification	The antibody was purified by immunogen affinity chromatography.
Form/Buffer	Liquid in 0.42% Potassium phosphate, 0.87% Sodium chloride, pH 7.3, 30% glycerol, and 0.01% sodium azide.

*AREX continuously optimizes our products. Webpage content may not reflect the latest updates. For inquiries, please contact info@arexbio.com or your local distributor.

*Clone Number, Reactivity, Source/Host and Clonality can be found in the product name and Key Features section above.

DATASHEET**mStrawberry-tag Rabbit Polyclonal Antibody**

CAT. NO. APA12353

DATA

Western blot analysis of over-expressed mStrawberry-tagged protein in 293T cell lysate.

STORAGE

Store at 4°C short term. For long term storage, store at -20°C, avoiding freeze/thaw cycles.

NOTE

For Research Use Only. Not for diagnostic, therapeutics, prophylactic or in vivo use.