

DATASHEET

Rubisco Large Chain Mouse Polyclonal Antibody

CAT. NO. APA12356

KEY FEATURES

Target	Rubisco Large Chain	Source / Host	Mouse
Reactivity	PlantSheep	Clonality	Polyclonal
Applications	WB	Conjugation	Unconjugated
Form / Buffer	Liquid in 0.42% Potassium phosphate, 0.87% Sodium chloride, pH 7.3, 30% glycerol, and 0.01% sodium azide.		Storage at -20°C

BACKGROUND

Ribulose-1,5-bisphosphate carboxylase/oxygenase (Rubisco) large subunit (RbCL, ~55 kDa) is the catalytic subunit of Rubisco, the most abundant protein on Earth and the key enzyme of the Calvin cycle that fixes atmospheric CO₂ in photosynthetic organisms. Anti-RbCL antibodies are used as loading controls in plant biology and to study photosynthetic capacity.

APPLICATION

To ensure optimal assay performance, AREX recommends conducting reagent titration tailored to each testing system for optimal detection results.

WB	1:2000 - 1:5000
----	-----------------

*Results are sample-specific. Please refer to your local assay conditions and test parameters for reference.

PRODUCT OVERVIEW

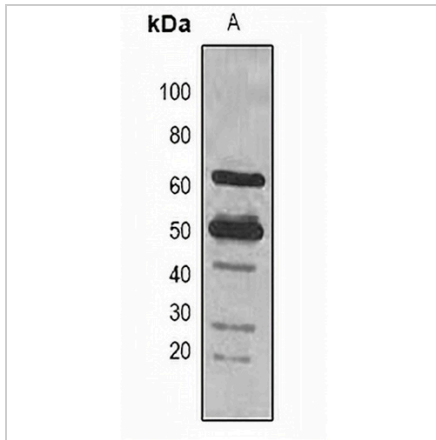
Description	Mouse polyclonal antibody to Rubisco
Specificity	Recognizes endogenous levels of Rubisco protein.
Antibody Type	Primary antibody
Immunogen	Natural protein corresponding to Rubisco Large Chain.
Purification	The antibody was purified by affinity chromatography.
Molecular Weight	Predicted: 52 kD; Observed: 53 kD
Form/Buffer	Liquid in 0.42% Potassium phosphate, 0.87% Sodium chloride, pH 7.3, 30% glycerol, and 0.01% sodium azide.

*AREX continuously optimizes our products. Webpage content may not reflect the latest updates. For inquiries, please contact info@arexbio.com or your local distributor.

*Clone Number, Reactivity, Source/Host and Clonality can be found in the product name and Key Features section above.

DATASHEET**Rubisco Large Chain Mouse Polyclonal Antibody**

CAT. NO. APA12356

DATA

Western blot analysis of Rubisco Large Chain expression in Arabidopsis thaliana (A) whole cell lysates. (Predicted band size: 52 kD; Observed band size: 53 kD)

STORAGE

Store at 4°C short term. For long term storage, store at -20°C, avoiding freeze/thaw cycles.

NOTE

For Research Use Only. Not for diagnostic, therapeutics, prophylactic or in vivo use.