

DATASHEET

Alliinase Rabbit Polyclonal Antibody

CAT. NO. APA12361

KEY FEATURES

Target	Alliinase	Source / Host	Rabbit
Reactivity	Allium sativum L	Clonality	Polyclonal
Applications	WB	Conjugation	Unconjugated
Form / Buffer	Liquid in 0.42% Potassium phosphate, 0.87% Sodium chloride, pH 7.3, 30% glycerol, and 0.01% sodium azide.		Storage at -20°C

BACKGROUND

Alliinase (alliin lyase, EC 4.4.1.4) is a pyridoxal phosphate-dependent enzyme found in garlic (*Allium sativum*) and other *Allium* species that converts alliin to alliin upon tissue disruption, generating the characteristic garlic flavor and bioactivity. Anti-alliinase antibodies are used in plant biology research and food authenticity testing.

APPLICATION

To ensure optimal assay performance, AREX recommends conducting reagent titration tailored to each testing system for optimal detection results.

WB	1:1000 - 1:3000
----	-----------------

*Results are sample-specific. Please refer to your local assay conditions and test parameters for reference.

PRODUCT OVERVIEW

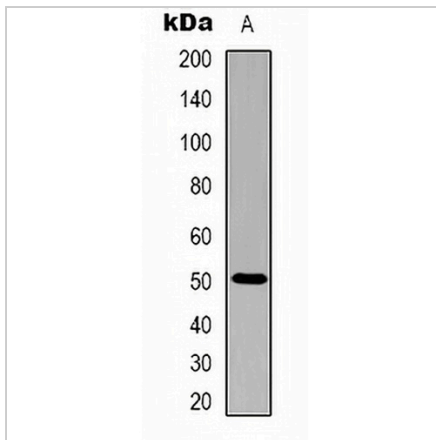
Description	Rabbit polyclonal antibody to Alliinase
Specificity	Recognizes endogenous levels of Alliinase protein.
Antibody Type	Primary antibody
Immunogen	Purified protein corresponding to Alliinase.
Purification	The antibody was purified by immunogen affinity chromatography.
Molecular Weight	Predicted: 50 kD; Observed: 50 kD
Form/Buffer	Liquid in 0.42% Potassium phosphate, 0.87% Sodium chloride, pH 7.3, 30% glycerol, and 0.01% sodium azide.

*AREX continuously optimizes our products. Webpage content may not reflect the latest updates. For inquiries, please contact info@arexbio.com or your local distributor.

*Clone Number, Reactivity, Source/Host and Clonality can be found in the product name and Key Features section above.

DATASHEET**Alliinase Rabbit Polyclonal Antibody**

CAT. NO. APA12361

DATA

Western blot analysis of Alliinase expression in purified alliinase (A) whole cell lysates.
(Predicted band size: 50 kD; Observed band size: 50 kD)

STORAGE

Store at 4°C short term. For long term storage, store at -20°C, avoiding freeze/thaw cycles.

NOTE

For Research Use Only. Not for diagnostic, therapeutics, prophylactic or in vivo use.