

DATASHEET

Beclin-1 Rabbit Polyclonal Antibody

CAT. NO. APA12369

KEY FEATURES

| | | | |
|---------------|---|---------------|---------------------|
| Target | Beclin-1 | Source / Host | Rabbit |
| Reactivity | Human, Mouse, Rat | Clonality | Polyclonal |
| Applications | WB | Conjugation | Unconjugated |
| Form / Buffer | Liquid in 0.42% Potassium phosphate, 0.87% Sodium chloride, pH 7.3, 30% glycerol, and 0.01% sodium azide. | | Storage at -20°C |

BACKGROUND

Plays a central role in autophagy . Acts as a core subunit of the PI3K complex that mediates formation of phosphatidylinositol 3-phosphate; different complex forms are believed to play a role in multiple membrane trafficking pathways: PI3KC3-C1 is involved in initiation of autophagosomes and PI3KC3-C2 in maturation of autophagosomes and endocytosis. Involved in regulation of degradative endocytic trafficking and required for the abscission step in cytokinesis, probably in the context of PI3KC3-C2 . Essential for the formation of PI3KC3-C2 but not PI3KC3-C1 PI3K complex forms. Involved in endocytosis . May play a role in antiviral host defense.

APPLICATION

To ensure optimal assay performance, AREX recommends conducting reagent titration tailored to each testing system for optimal detection results.

| | |
|----|-----------------|
| WB | 1:1000 - 1:2000 |
|----|-----------------|

*Results are sample-specific. Please refer to your local assay conditions and test parameters for reference.

PRODUCT OVERVIEW

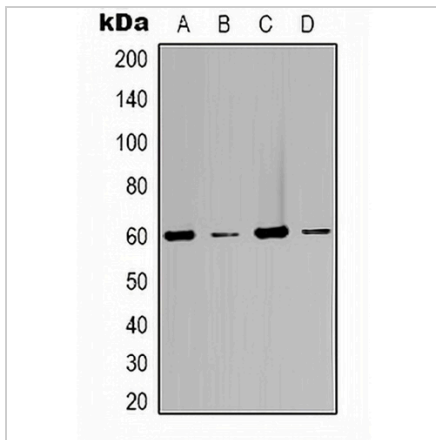
| | |
|-------------------|---|
| Description | Rabbit polyclonal antibody to Beclin-1 |
| Specificity | Recognizes endogenous levels of Beclin-1 protein. |
| Antibody Type | Primary antibody |
| Immunogen | Recombinant protein corresponding to human Beclin-1. |
| Purification | The antibody was purified by immunogen affinity chromatography. |
| Molecular Weight | Predicted: 51 kD; Observed: 60 kD |
| Form/Buffer | Liquid in 0.42% Potassium phosphate, 0.87% Sodium chloride, pH 7.3, 30% glycerol, and 0.01% sodium azide. |
| Alternative Names | GT197; Beclin-1; Coiled-coil myosin-like BCL2-interacting protein; Protein GT197 |
| Gene Symbol | BECN1 |
| Entrez Gene | 8678(Human) |
| SwissProt | Q14457(Human) |

*AREX continuously optimizes our products. Webpage content may not reflect the latest updates. For inquiries, please contact info@arexbio.com or your local distributor.

*Clone Number, Reactivity, Source/Host and Clonality can be found in the product name and Key Features section above.

DATASHEET**Beclin-1 Rabbit Polyclonal Antibody**

CAT. NO. APA12369

DATA

Western blot analysis of Beclin-1 expression in Jurkat (A), 293T (B), C2C12 (C), rat kidney (D) whole cell lysates. (Predicted band size: 51 kD; Observed band size: 60 kD)

STORAGE

Store at 4°C short term. For long term storage, store at -20°C, avoiding freeze/thaw cycles.

NOTE

For Research Use Only. Not for diagnostic, therapeutics, prophylactic or in vivo use.