

## DATASHEET

# Bovine Serum Albumin Rabbit Polyclonal Antibody

CAT. NO. APA12373

### KEY FEATURES

Target	Bovine Serum Albumin	Source / Host	Rabbit
Reactivity	Bovine	Clonality	Polyclonal
Applications	WB	Conjugation	Unconjugated
Form / Buffer	Liquid in 0.42% Potassium phosphate, 0.87% Sodium chloride, pH 7.3, 30% glycerol, and 0.01% sodium azide.		Storage at-20°C

### BACKGROUND

Bovine serum albumin (BSA) is the major serum protein of cattle (~66 kDa), widely used as a blocking agent, protein standard, and stabilizer in biochemistry and immunoassays. Anti-BSA antibodies are used to detect BSA contamination in samples and as quality controls in immunoassay development.

### APPLICATION

To ensure optimal assay performance, AREX recommends conducting reagent titration tailored to each testing system for optimal detection results.

WB	1:2000 - 1:5000
----	-----------------

\*Results are sample-specific. Please refer to your local assay conditions and test parameters for reference.

### PRODUCT OVERVIEW

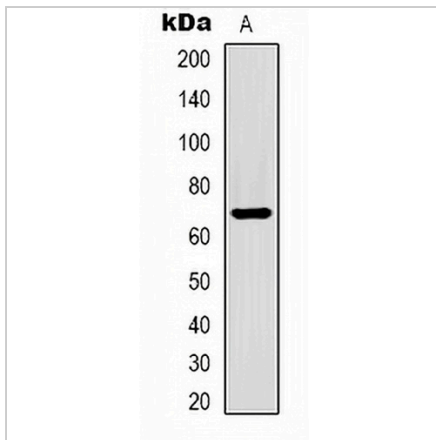
Description	Rabbit polyclonal antibody to Bovine Serum Albumin
Specificity	Recognizes endogenous levels of Bovine Serum Albumin protein.
Antibody Type	Primary antibody
Immunogen	Purified protein corresponding to Bovine Serum Albumin.
Purification	The antibody was purified by immunogen affinity chromatography.
Molecular Weight	Predicted: 65 kD; Observed: 65 kD
Form/Buffer	Liquid in 0.42% Potassium phosphate, 0.87% Sodium chloride, pH 7.3, 30% glycerol, and 0.01% sodium azide.
Alternative Names	BSA

\*AREX continuously optimizes our products. Webpage content may not reflect the latest updates. For inquiries, please contact [info@arexbio.com](mailto:info@arexbio.com) or your local distributor.

\*Clone Number, Reactivity, Source/Host and Clonality can be found in the product name and Key Features section above.

**DATASHEET****Bovine Serum Albumin Rabbit Polyclonal Antibody**

CAT. NO. APA12373

**DATA**

Western blot analysis of Bovine Serum Albumin expression in Bovine Serum Albumin (A) whole cell lysates. (Predicted band size: 65 kD; Observed band size: 65 kD)

**STORAGE**

Store at 4°C short term. For long term storage, store at -20°C, avoiding freeze/thaw cycles.

**NOTE**

For Research Use Only. Not for diagnostic, therapeutics, prophylactic or in vivo use.