

**DATASHEET**

**GAT1 Rabbit Polyclonal Antibody**

CAT. NO. APA12401

**KEY FEATURES**

Target	GAT1	Source / Host	Rabbit
Reactivity	Human, Mouse, Rat	Clonality	Polyclonal
Applications	WB, IHC	Conjugation	Unconjugated
Form / Buffer	Liquid in 0.42% Potassium phosphate, 0.87% Sodium chloride, pH 7.3, 30% glycerol, and 0.01% sodium azide.		Storage at-20°C

**BACKGROUND**

Mediates transport of gamma-aminobutyric acid (GABA) together with sodium and chloride and is responsible for the reuptake of GABA from the synapse together with sodium and chloride and is responsible for the reuptake of GABA from the synapse . The translocation of GABA, however, may also occur in the reverse direction leading to the release of GABA . The direction and magnitude of GABA transport is a consequence of the prevailing thermodynamic conditions, determined by membrane potential and the intracellular and extracellular concentrations of Na(+), Cl(-) and GABA . Can also mediate sodium- and chloride-dependent transport of hypotaurine but to a much lower extent as compared to GABA .

**APPLICATION**

To ensure optimal assay performance, AREX recommends conducting reagent titration tailored to each testing system for optimal detection results.

WB	1:1000 - 1:2000
IHC	1:100 - 1:200

\*Results are sample-specific. Please refer to your local assay conditions and test parameters for reference.

**PRODUCT OVERVIEW**

Description	Rabbit polyclonal antibody to GAT1
Specificity	Recognizes endogenous levels of GAT1 protein.
Antibody Type	Primary antibody
Immunogen	KLH-conjugated synthetic peptide encompassing a sequence of human GAT1. The exact sequence is proprietary.
Purification	The antibody was purified by immunogen affinity chromatography.
Molecular Weight	Predicted: 67 kD; Observed: 67 kD
Form/Buffer	Liquid in 0.42% Potassium phosphate, 0.87% Sodium chloride, pH 7.3, 30% glycerol, and 0.01% sodium azide.
Alternative Names	GABATR; GABT1; GAT1; Sodium- and chloride-dependent GABA transporter 1; GAT-1; Solute carrier family 6 member 1
Gene Symbol	SLC6A1
Entrez Gene	6529(Human)
SwissProt	P30531(Human)

\*AREX continuously optimizes our products. Webpage content may not reflect the latest updates. For inquiries, please contact [info@arexbio.com](mailto:info@arexbio.com) or your local distributor.

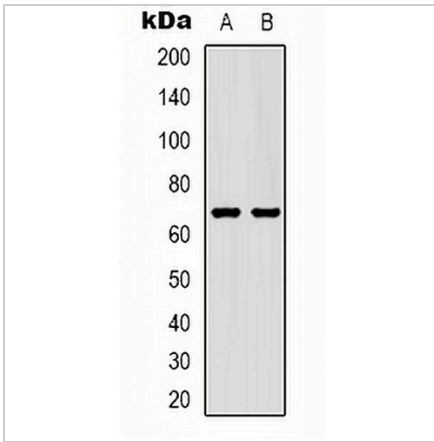
\*Clone Number, Reactivity, Source/Host and Clonality can be found in the product name and Key Features section above.

**DATASHEET**

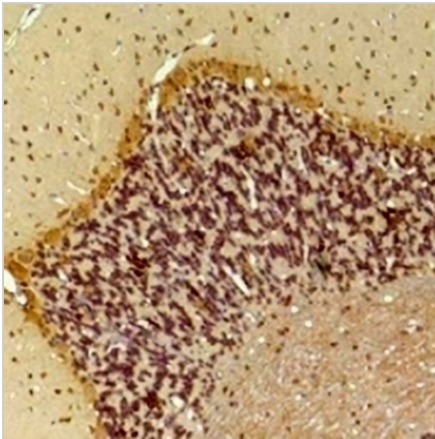
**GAT1 Rabbit Polyclonal Antibody**

CAT. NO. APA12401

**DATA**



Western blot analysis of GAT1 expression in mouse brain (A), rat brain (B) whole cell lysates. (Predicted band size: 67 kD; Observed band size: 67 kD)



Immunohistochemical analysis of GAT1 staining in rat brain, mouse brain formalin fixed paraffin embedded tissue section. The section was pre-treated using heat mediated antigen retrieval with sodium citrate buffer (pH 6.0). The section was then incubated with the antibody at room temperature and detected using an HRP conjugated compact polymer system. DAB was used as the chromogen. The section was then counterstained with haematoxylin and mounted with DPX.

**STORAGE**

Store at 4°C short term. For long term storage, store at -20°C, avoiding freeze/thaw cycles.

**NOTE**

For Research Use Only. Not for diagnostic, therapeutics, prophylactic or in vivo use.