

DATASHEET

Ghrelin Receptor Rabbit Polyclonal Antibody

CAT. NO. APA12402

KEY FEATURES

Target	Ghrelin Receptor	Source / Host	Rabbit
Reactivity	Human, Mouse, Rat	Clonality	Polyclonal
Applications	WB	Conjugation	Unconjugated
Form / Buffer	Liquid in 0.42% Potassium phosphate, 0.87% Sodium chloride, pH 7.3, 30% glycerol, and 0.01% sodium azide.		Storage at-20°C

BACKGROUND

G-protein-coupled receptor specific to ghrelin, an appetite-regulating peptide hormone commonly found in stomach . Upon activation, stimulates appetite and promotes growth hormone secretion . Also binds other growth hormone releasing peptides (GHRP) (e.g. Met-enkephalin and GHRP-6) as well as non-peptide, low molecular weight secretagogues (e.g. L-692, 429, MK-0677, adenosine) .

APPLICATION

To ensure optimal assay performance, AREX recommends conducting reagent titration tailored to each testing system for optimal detection results.

WB	1:1000 - 1:2000
IHC	1:100 - 1:200

*Results are sample-specific. Please refer to your local assay conditions and test parameters for reference.

PRODUCT OVERVIEW

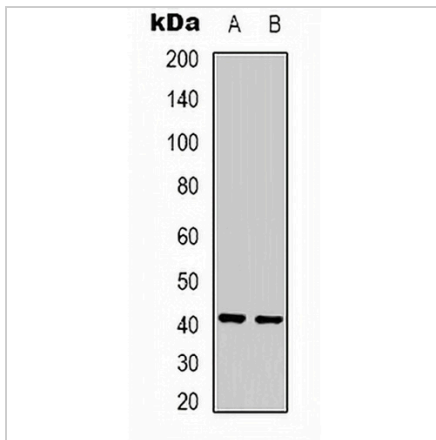
Description	Rabbit polyclonal antibody to Ghrelin Receptor
Specificity	Recognizes endogenous levels of Ghrelin Receptor protein.
Antibody Type	Primary antibody
Immunogen	KLH-conjugated synthetic peptide encompassing a sequence of human Ghrelin Receptor. The exact sequence is proprietary.
Purification	The antibody was purified by immunogen affinity chromatography.
Molecular Weight	Predicted: 41 kD; Observed: 41 kD
Form/Buffer	Liquid in 0.42% Potassium phosphate, 0.87% Sodium chloride, pH 7.3, 30% glycerol, and 0.01% sodium azide.
Alternative Names	Growth hormone secretagogue receptor type 1; GHS-R; GH-releasing peptide receptor; GHRP; Ghrelin receptor
Gene Symbol	GHSR
Entrez Gene	2693(Human)
SwissProt	Q92847(Human)

*AREX continuously optimizes our products. Webpage content may not reflect the latest updates. For inquiries, please contact info@arexbio.com or your local distributor.

*Clone Number, Reactivity, Source/Host and Clonality can be found in the product name and Key Features section above.

DATASHEET**Ghrelin Receptor Rabbit Polyclonal Antibody**

CAT. NO. APA12402

DATA

Western blot analysis of Ghrelin Receptor expression in Jurkat (A), rat liver (B) whole cell lysates. (Predicted band size: 41 kD; Observed band size: 41 kD)

STORAGE

Store at 4°C short term. For long term storage, store at -20°C, avoiding freeze/thaw cycles.

NOTE

For Research Use Only. Not for diagnostic, therapeutics, prophylactic or in vivo use.