

DATASHEET

Histone H1 (Phospho-S2) Rabbit Polyclonal Antibody

CAT. NO. APA12409

KEY FEATURES

Target	Histone H1 (Phospho-S2)	Source / Host	Rabbit
Reactivity	Human, Mouse, Rat	Clonality	Polyclonal
Applications	WB, IHC	Conjugation	Unconjugated
Form / Buffer	Liquid in 0.42% Potassium phosphate, 0.87% Sodium chloride, pH 7.3, 30% glycerol, and 0.01% sodium azide.	Storage	at-20°C

BACKGROUND

Histone H1 protein binds to linker DNA between nucleosomes forming the macromolecular structure known as the chromatin fiber . Histones H1 are necessary for the condensation of nucleosome chains into higher-order structured fibers and promote formation of the H3K27me3 mark by the PRC2/EED-EZH2 complex . Also acts as a regulator of individual gene transcription through chromatin remodeling, nucleosome spacing and DNA methylation .

APPLICATION

To ensure optimal assay performance, AREX recommends conducting reagent titration tailored to each testing system for optimal detection results.

WB	1:1000 - 1:2000
IHC	1:200 - 1:500

*Results are sample-specific. Please refer to your local assay conditions and test parameters for reference.

PRODUCT OVERVIEW

Description	Rabbit polyclonal antibody to Histone H1 (Phospho-S2)
Specificity	Recognizes endogenous levels of Histone H1 protein only when phosphorylated at S2.
Antibody Type	Primary antibody
Immunogen	KLH-conjugated synthetic phosphopeptide corresponding to residues surrounding S2 of human Histone H1 protein. The exact sequence is proprietary.
Purification	The antibody was purified by immunogen affinity chromatography.
Molecular Weight	Predicted: 21; Observed: 17-25 kD
Form/Buffer	Liquid in 0.42% Potassium phosphate, 0.87% Sodium chloride, pH 7.3, 30% glycerol, and 0.01% sodium azide.
Alternative Names	HIST1H1A; H1F1; Histone H1.1; Histone H1a; HIST1H1C; H1F2; Histone H1.2; Histone H1c; Histone H1d; Histone H1s-1; HIST1H1D; H1F3; Histone H1.3; Histone H1c; Histone H1s-2; HIST1H1E; H1F4; Histone H1.4; Histone H1b; Histone H1s-4
Gene Symbol	HIST1H1A; HIST1H1C; HIST1H1D; HIST1H1E
Entrez Gene	3024; 3006; 3007; 3008(Human); 80838; 50708; 14957; 50709(Mouse); 291145; 201097(Rat)
SwissProt	Q02539; P16403; P16402; P10412(Human); P43275; P15864; P43277; P43274(Mouse); D4A3K5; P15865(Rat)

*AREX continuously optimizes our products. Webpage content may not reflect the latest updates. For inquiries, please contact info@arexbio.com or your local distributor.

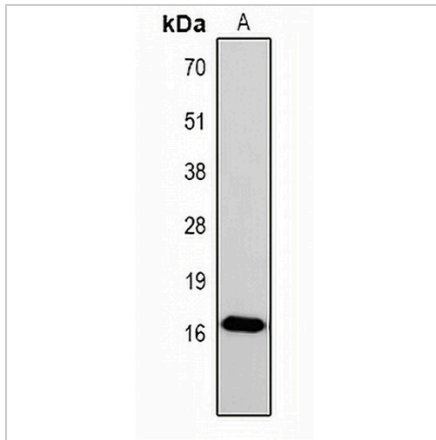
*Clone Number, Reactivity, Source/Host and Clonality can be found in the product name and Key Features section above.

DATASHEET

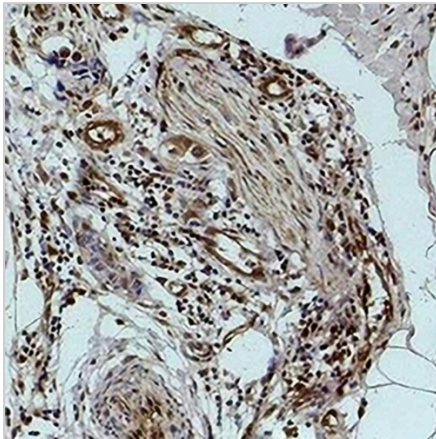
Histone H1 (Phospho-S2) Rabbit Polyclonal Antibody

CAT. NO. APA12409

DATA



Western blot analysis of Histone H1 (Phospho-S2) expression in HeLa (A) whole cell lysates. (Predicted band size: 21; 22 kD; Observed band size: 17-25 kD)



Immunohistochemical analysis of Histone H1 (Phospho-S2) staining in human breast cancer formalin fixed paraffin embedded tissue section. The section was pre-treated using heat mediated antigen retrieval with sodium citrate buffer (pH 6.0). The section was then incubated with the antibody at room temperature and detected using an HRP conjugated compact polymer system. DAB was used as the chromogen. The section was then counterstained with haematoxylin and mounted with DPX.

STORAGE

Store at 4°C short term. For long term storage, store at -20°C, avoiding freeze/thaw cycles.

NOTE

For Research Use Only. Not for diagnostic, therapeutics, prophylactic or in vivo use.