

DATASHEET

Histone H2B (Acetyl-K23) Rabbit Polyclonal Antibody

CAT. NO. APA12419

KEY FEATURES

Target	Histone H2B (Acetyl-K23)	Source / Host	Rabbit
Reactivity	Human, Mouse, Rat	Clonality	Polyclonal
Applications	WB, IHC	Conjugation	Unconjugated
Form / Buffer	Liquid in 0.42% Potassium phosphate, 0.87% Sodium chloride, pH 7.3, 30% glycerol, and 0.01% sodium azide.		Storage at -20°C

BACKGROUND

Variant histone specifically required to direct the transformation of dissociating nucleosomes to protamine in male germ cells . Entirely replaces classical histone H2B prior nucleosome to protamine transition and probably acts as a nucleosome dissociating factor that creates a more dynamic chromatin, facilitating the large-scale exchange of histones . Core component of nucleosome . Nucleosomes wrap and compact DNA into chromatin, limiting DNA accessibility to the cellular machineries which require DNA as a template . Histones thereby play a central role in transcription regulation, DNA repair, DNA replication and chromosomal stability . DNA accessibility is regulated via a complex set of post-translational modifications of histones, also called histone code, and nucleosome remodeling .

APPLICATION

To ensure optimal assay performance, AREX recommends conducting reagent titration tailored to each testing system for optimal detection results.

WB	1:500 - 1:1000
IHC	1:200 - 1:500

*Results are sample-specific. Please refer to your local assay conditions and test parameters for reference.

PRODUCT OVERVIEW

Description	Rabbit polyclonal antibody to Histone H2B (Acetyl-K23)
Specificity	Recognizes endogenous levels of Histone H2B protein only when acetylated at K23.
Antibody Type	Primary antibody
Immunogen	KLH-conjugated synthetic acetylated peptide corresponding to residues surrounding K23 of human Histone H2B protein. The exact sequence is proprietary.
Purification	The antibody was purified by immunogen affinity chromatography.
Molecular Weight	Predicted: 14 kD; Observed: 15 kD
Form/Buffer	Liquid in 0.42% Potassium phosphate, 0.87% Sodium chloride, pH 7.3, 30% glycerol, and 0.01% sodium azide.
Alternative Names	HIST1H2BA; TSH2B; Histone H2B type 1-A; Histone H2B testis; Testis-specific histone H2B; HIST1H2BB; H2BFF; Histone H2B type 1-B; Histone H2B.1; Histone H2B.f; H2B/f; HIST1H2BC; H2BFL; HIST1H2BE; H2BFH; HIST1H2BF; H2BFG; HIST1H2BG; H2BFA; HIST1H2BI; H2BFK; Histone H2B type 1-C/E/F/G/I; Histone H2B.1 A; Histone H2B.a; H2B/a; Histone H2B.g; H2B/g; Histone H2B.h; H2B/h; Histone H2B.k; H2B/k; Histone H2B.l; H2B/l
Gene Symbol	HIST1H2BC
Entrez Gene	255626; 3018; 3017; 8339; 8343; 8344; 8346; 8347(Human); 319177; 319178; 319179(Mouse); 24829(Rat)
SwissProt	Q96A08; P33778; P62807(Human); P70696; Q64475; Q6ZWY9(Mouse); Q00729(Rat)

*AREX continuously optimizes our products. Webpage content may not reflect the latest updates. For inquiries, please contact info@arex.bio or your local distributor

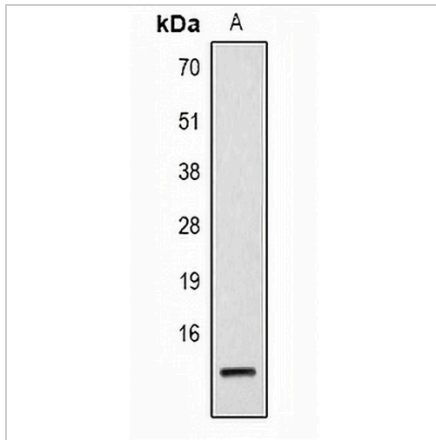
*Clone Number, Reactivity, Source/Host and Clonality can be found in the product name and Key Features section above

DATASHEET

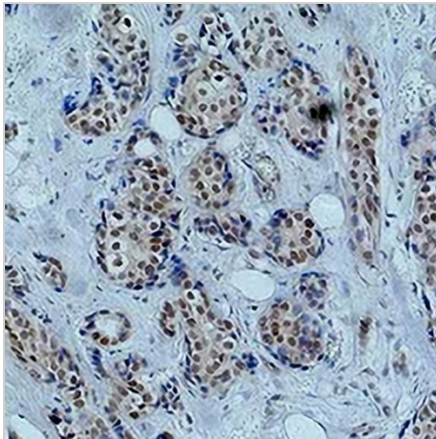
Histone H2B (Acetyl-K23) Rabbit Polyclonal Antibody

CAT. NO. APA12419

DATA



Western blot analysis of Histone H2B (Acetyl-K23) expression in HeLa TSA-treated (A) whole cell lysates. (Predicted band size: 14 kD; Observed band size: 15 kD)



Immunohistochemical analysis of Histone H2B (Acetyl-K23) staining in human breast cancer formalin fixed paraffin embedded tissue section. The section was pre-treated using heat mediated antigen retrieval with sodium citrate buffer (pH 6.0). The section was then incubated with the antibody at room temperature and detected using an HRP conjugated compact polymer system. DAB was used as the chromogen. The section was then counterstained with haematoxylin and mounted with DPX.

STORAGE

Store at 4°C short term. For long term storage, store at -20°C, avoiding freeze/thaw cycles.

NOTE

For Research Use Only. Not for diagnostic, therapeutics, prophylactic or in vivo use.