

DATASHEET

IGFN1 Rabbit Polyclonal Antibody

CAT. NO. APA12454

KEY FEATURES

| | | | |
|---------------|---|---------------|---------------------|
| Target | IGFN1 | Source / Host | Rabbit |
| Reactivity | Human, Mouse, Rat, Pig | Clonality | Polyclonal |
| Applications | WB, IHC | Conjugation | Unconjugated |
| Form / Buffer | Liquid in 0.42% Potassium phosphate, 0.87% Sodium chloride, pH 7.3, 30% glycerol, and 0.01% sodium azide. | | Storage at -20°C |

BACKGROUND

Immunoglobulin-like and fibronectin type III domain-containing protein 1 (IGFN1), also known as EEF1A2-binding protein 1, KY-interacting protein 1. Subunit: Interacts with FLNC . Interacts with KY Subcellular location: Nucleus; Cytoplasm, myofibril, sarcomere, Z line Tissue specificity: Expressed in skeletal muscle

APPLICATION

To ensure optimal assay performance, AREX recommends conducting reagent titration tailored to each testing system for optimal detection results.

| | |
|-----|----------------|
| WB | 1:500 - 1:1000 |
| IHC | 1:50 - 1:200 |

*Results are sample-specific. Please refer to your local assay conditions and test parameters for reference.

PRODUCT OVERVIEW

| | |
|-------------------|--|
| Description | Rabbit polyclonal antibody to IGFN1 |
| Specificity | Recognizes endogenous levels of IGFN1 protein. |
| Antibody Type | Primary antibody |
| Immunogen | Recombinant protein corresponding to human IGFN1. |
| Purification | The antibody was purified by immunogen affinity chromatography. |
| Molecular Weight | Predicted: 137 kD; Observed: 115 kD |
| Form/Buffer | Liquid in 0.42% Potassium phosphate, 0.87% Sodium chloride, pH 7.3, 30% glycerol, and 0.01% sodium azide. |
| Alternative Names | EEF1A2BP1; KYIP1; Immunoglobulin-like and fibronectin type III domain-containing protein 1; EEF1A2-binding protein 1; KY-interacting protein 1 |
| Gene Symbol | IGFN1 |
| Entrez Gene | 91156(Human) |
| SwissProt | Q86VF2(Human) |

*AREX continuously optimizes our products. Webpage content may not reflect the latest updates. For inquiries, please contact info@arexbio.com or your local distributor.

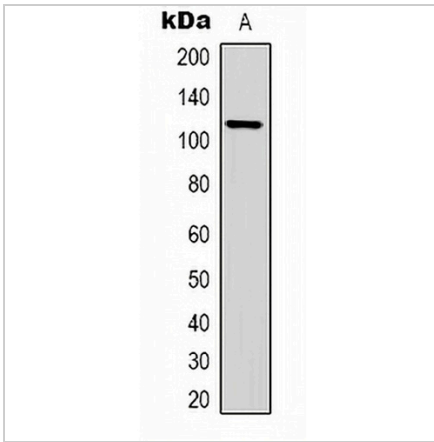
*Clone Number, Reactivity, Source/Host and Clonality can be found in the product name and Key Features section above.

DATASHEET

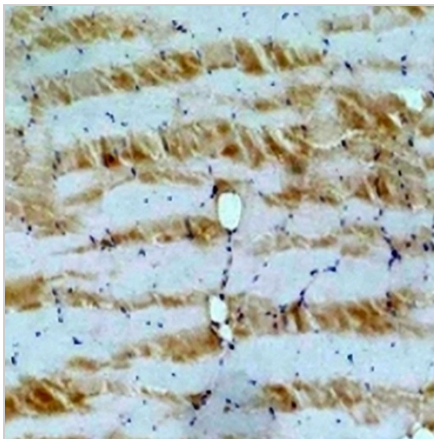
IGFN1 Rabbit Polyclonal Antibody

CAT. NO. APA12454

DATA



Western blot analysis of IGFN1 expression in pig skeletal muscle (A) whole cell lysates. (Predicted band size: 137 kD; Observed band size: 115 kD)



Immunohistochemical analysis of IGFN1 staining in pig skeletal muscle formalin fixed paraffin embedded tissue section. The section was pre-treated using heat mediated antigen retrieval with sodium citrate buffer (pH 6.0). The section was then incubated with the antibody at room temperature and detected using an HRP conjugated compact polymer system. DAB was used as the chromogen. The section was then counterstained with haematoxylin and mounted with DPX.

STORAGE

Store at 4°C short term. For long term storage, store at -20°C, avoiding freeze/thaw cycles.

NOTE

For Research Use Only. Not for diagnostic, therapeutics, prophylactic or in vivo use.