

DATASHEET

LDHD Rabbit Polyclonal Antibody

CAT. NO. APA12464

KEY FEATURES

Target	LDHD	Source / Host	Rabbit
Reactivity	Human, Mouse, Rat	Clonality	Polyclonal
Applications	WB	Conjugation	Unconjugated
Form / Buffer	Liquid in 0.42% Potassium phosphate, 0.87% Sodium chloride, pH 7.3, 30% glycerol, and 0.01% sodium azide.		Storage at -20°C

BACKGROUND

The mitochondrial D-lactate dehydrogenase is a stereoselective dehydrogenase that targets a wide variety of D-2-hydroxyacids, particularly those with small to moderately sized hydrophobic groups attached to the C2 atom. It includes D-lactate which is generated in small amounts either endogenously through the methylglyoxal metabolism pathway or exogenously via intestinal bacterial activity and dietary intake. The dehydrogenase acts specifically on D-lactate, not on its stereoisomer L-lactate, and prevents the toxic accumulation of D-lactate in the organism. By converting branched-chain D-2-hydroxyacids into branched-chain ketoacids, it may indirectly regulate branched-chain amino acid metabolism.

APPLICATION

To ensure optimal assay performance, AREX recommends conducting reagent titration tailored to each testing system for optimal detection results.

WB	1:1000 - 1:3000
----	-----------------

*Results are sample-specific. Please refer to your local assay conditions and test parameters for reference.

PRODUCT OVERVIEW

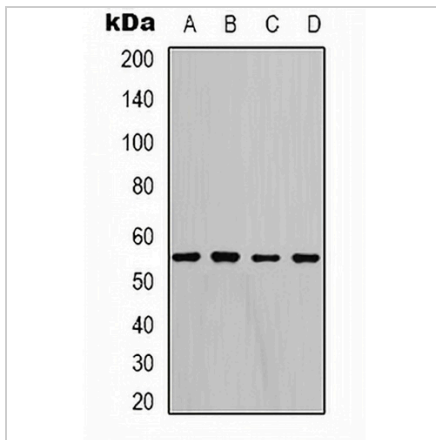
Description	Rabbit polyclonal antibody to LDHD
Specificity	Recognizes endogenous levels of LDHD protein.
Antibody Type	Primary antibody
Immunogen	Recombinant protein corresponding to human LDHD.
Purification	The antibody was purified by immunogen affinity chromatography.
Molecular Weight	Predicted: 54 kD; Observed: 55 kD
Form/Buffer	Liquid in 0.42% Potassium phosphate, 0.87% Sodium chloride, pH 7.3, 30% glycerol, and 0.01% sodium azide.
Alternative Names	Probable D-lactate dehydrogenase mitochondrial; DLD; Lactate dehydrogenase D
Gene Symbol	LDHD
Entrez Gene	197257(Human); 52815(Mouse)
SwissProt	Q86WU2(Human); Q7TNG8(Mouse)

*AREX continuously optimizes our products. Webpage content may not reflect the latest updates. For inquiries, please contact info@arexbio.com or your local distributor.

*Clone Number, Reactivity, Source/Host and Clonality can be found in the product name and Key Features section above.

DATASHEET**LDHD Rabbit Polyclonal Antibody**

CAT. NO. APA12464

DATA

Western blot analysis of LDHD expression in Hela (A), mouse skeletal muscle (B), mouse liver (C), rat kidney (D) whole cell lysates. (Predicted band size: 54 kD; Observed band size: 55 kD)

STORAGE

Store at 4°C short term. For long term storage, store at -20°C, avoiding freeze/thaw cycles.

NOTE

For Research Use Only. Not for diagnostic, therapeutics, prophylactic or in vivo use.