

**DATASHEET**

**LexA DNA Binding Region Rabbit Polyclonal Antibody**

CAT. NO. APA12465

**KEY FEATURES**

|               |   |               |                     |
|---------------|---|---------------|---------------------|
| Target        | LexA DNA Binding Region   | Source / Host | Rabbit              |
| Reactivity    |   | Clonality     | Polyclonal          |
| Applications  | WB  | Conjugation   | Unconjugated        |
| Form / Buffer | Liquid in 0.42% Potassium phosphate, 0.87% Sodium chloride, pH 7.3, 30% glycerol, and 0.01% sodium azide. |               | Storage<br>at -20°C |

**BACKGROUND**

The LexA DNA-binding domain is the N-terminal portion of the E. coli LexA repressor that recognizes specific operator DNA sequences. It is widely used in yeast two-hybrid systems and other transcriptional reporter assays as a fusion partner to recruit DNA targets, enabling study of protein-protein interactions and transcriptional regulation.

**APPLICATION**

To ensure optimal assay performance, AREX recommends conducting reagent titration tailored to each testing system for optimal detection results.

|    |                   |
|----|-------------------|
| WB | 1:10000 - 1:50000 |
|----|-------------------|

\*Results are sample-specific. Please refer to your local assay conditions and test parameters for reference.

**PRODUCT OVERVIEW**

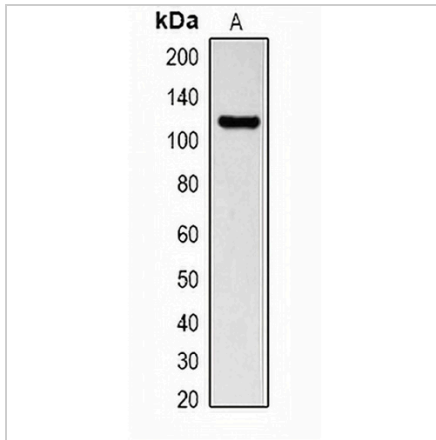
|               |   |
|---------------|---|
| Description   | Rabbit polyclonal antibody to LexA DNA Binding Region   |
| Specificity   | Recognizes endogenous levels of LexA DNA Binding Region protein.  |
| Antibody Type | Primary antibody  |
| Immunogen     | Recombinant protein corresponding to LexA DNA Binding Region.   |
| Purification  | The antibody was purified by immunogen affinity chromatography.   |
| Form/Buffer   | Liquid in 0.42% Potassium phosphate, 0.87% Sodium chloride, pH 7.3, 30% glycerol, and 0.01% sodium azide. |

\*AREX continuously optimizes our products. Webpage content may not reflect the latest updates. For inquiries, please contact [info@arexbio.com](mailto:info@arexbio.com) or your local distributor.

\*Clone Number, Reactivity, Source/Host and Clonality can be found in the product name and Key Features section above.

**DATASHEET****LexA DNA Binding Region Rabbit Polyclonal Antibody**

CAT. NO. APA12465

**DATA**

Western blot analysis of LexA DNA Binding Region expression in recombinant LexA protein (A) whole cell lysates.

**STORAGE**

Store at 4°C short term. For long term storage, store at -20°C, avoiding freeze/thaw cycles.

**NOTE**

For Research Use Only. Not for diagnostic, therapeutics, prophylactic or in vivo use.