

DATASHEET

Na⁺/K⁺-ATPase beta1 Rabbit Polyclonal Antibody

CAT. NO. APA12470

KEY FEATURES

| | | | |
|---------------|---|---------------|---------------------|
| Target | Na ⁺ /K ⁺ -ATPase beta1 | Source / Host | Rabbit |
| Reactivity | Human, Mouse, Rat | Clonality | Polyclonal |
| Applications | WB | Conjugation | Unconjugated |
| Form / Buffer | Liquid in 0.42% Potassium phosphate, 0.87% Sodium chloride, pH 7.3, 30% glycerol, and 0.01% sodium azide. | | Storage at -20°C |

BACKGROUND

This is the non-catalytic component of the active enzyme, which catalyzes the hydrolysis of ATP coupled with the exchange of Na(+) and K(+) ions across the plasma membrane. The beta subunit regulates, through assembly of alpha/beta heterodimers, the number of sodium pumps transported to the plasma membrane and K(+) ions across the plasma membrane. The beta subunit regulates, through assembly of alpha/beta heterodimers, the number of sodium pumps transported to the plasma membrane . Plays a role in innate immunity by enhancing virus-triggered induction of interferons (IFNs) and interferon stimulated genes (ISGs). Mechanistically, enhances the ubiquitination of TRAF3 and TRAF6 as well as the phosphorylation of TAK1 and TBK1 .

APPLICATION

To ensure optimal assay performance, AREX recommends conducting reagent titration tailored to each testing system for optimal detection results.

| | |
|----|-----------------|
| WB | 1:1000 - 1:2000 |
|----|-----------------|

*Results are sample-specific. Please refer to your local assay conditions and test parameters for reference.

PRODUCT OVERVIEW

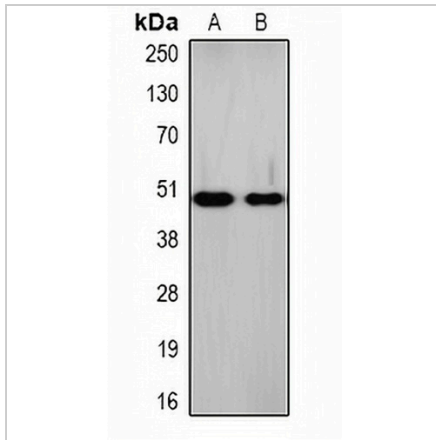
| | |
|-------------------|---|
| Description | Rabbit polyclonal antibody to Na ⁺ /K ⁺ -ATPase beta1 |
| Specificity | Recognizes endogenous levels of Na ⁺ /K ⁺ -ATPase beta1 protein. |
| Antibody Type | Primary antibody |
| Immunogen | KLH-conjugated synthetic peptide encompassing a sequence of human Na ⁺ /K ⁺ -ATPase beta1. The exact sequence is proprietary. |
| Purification | The antibody was purified by immunogen affinity chromatography. |
| Molecular Weight | Predicted: 35 kD; Observed: 45-50 kD |
| Form/Buffer | Liquid in 0.42% Potassium phosphate, 0.87% Sodium chloride, pH 7.3, 30% glycerol, and 0.01% sodium azide. |
| Alternative Names | ATP1B; Sodium/potassium-transporting ATPase subunit beta-1; Sodium/potassium-dependent ATPase subunit beta-1 |
| Gene Symbol | ATP1B1 |
| Entrez Gene | 481(Human); 11931(Mouse); 25650(Rat) |
| SwissProt | P05026(Human); P14094(Mouse); P07340(Rat) |

*AREX continuously optimizes our products. Webpage content may not reflect the latest updates. For inquiries, please contact info@arexbio.com or your local distributor.

*Clone Number, Reactivity, Source/Host and Clonality can be found in the product name and Key Features section above.

DATASHEET**Na⁺/K⁺-ATPase beta1 Rabbit Polyclonal Antibody**

CAT. NO. APA12470

DATA

Western blot analysis of Na⁺/K⁺-ATPase beta1 expression in mouse brain (A), rat brain (B) whole cell lysates. (Predicted band size: 35 kD; Observed band size: 45-50 kD)

STORAGE

Store at 4°C short term. For long term storage, store at -20°C, avoiding freeze/thaw cycles.

NOTE

For Research Use Only. Not for diagnostic, therapeutics, prophylactic or in vivo use.