

**DATASHEET**

**SLC12A4 Rabbit Polyclonal Antibody**

CAT. NO. APA12479

**KEY FEATURES**

Target	SLC12A4	Source / Host	Rabbit
Reactivity	Human, Mouse, Rat	Clonality	Polyclonal
Applications	WB, IHC	Conjugation	Unconjugated
Form / Buffer	Liquid in 0.42% Potassium phosphate, 0.87% Sodium chloride, pH 7.3, 30% glycerol, and 0.01% sodium azide.		Storage at -20°C

**BACKGROUND**

Mediates electroneutral potassium-chloride cotransport when activated by cell swelling . May contribute to cell volume homeostasis in single cells . May be involved in the regulation of basolateral Cl(-) exit in NaCl absorbing epithelia .

**APPLICATION**

To ensure optimal assay performance, AREX recommends conducting reagent titration tailored to each testing system for optimal detection results.

WB	1:1000 - 1:2000
IHC	1:100 - 1:200

\*Results are sample-specific. Please refer to your local assay conditions and test parameters for reference.

**PRODUCT OVERVIEW**

Description	Rabbit polyclonal antibody to SLC12A4
Specificity	Recognizes endogenous levels of SLC12A4 protein.
Antibody Type	Primary antibody
Immunogen	KLH-conjugated synthetic peptide encompassing a sequence of human SLC12A4. The exact sequence is proprietary.
Purification	The antibody was purified by immunogen affinity chromatography.
Molecular Weight	Predicted: 120 kD; Observed: 150 kD
Form/Buffer	Liquid in 0.42% Potassium phosphate, 0.87% Sodium chloride, pH 7.3, 30% glycerol, and 0.01% sodium azide.
Alternative Names	KCC1; Solute carrier family 12 member 4; Electroneutral potassium-chloride cotransporter 1; Erythroid K-Cl cotransporter 1; hKCC1
Gene Symbol	SLC12A4
Entrez Gene	6560(Human)
SwissProt	Q9UP95(Human)

\*AREX continuously optimizes our products. Webpage content may not reflect the latest updates. For inquiries, please contact [info@arexbio.com](mailto:info@arexbio.com) or your local distributor.

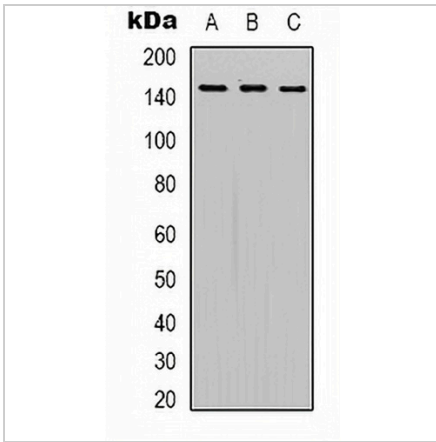
\*Clone Number, Reactivity, Source/Host and Clonality can be found in the product name and Key Features section above.

**DATASHEET**

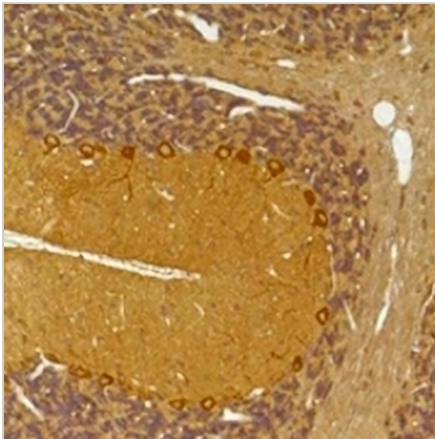
**SLC12A4 Rabbit Polyclonal Antibody**

CAT. NO. APA12479

**DATA**



Western blot analysis of SLC12A4 expression in HeLa (A), mouse brain (B), rat brain (C) whole cell lysates. (Predicted band size: 120 kD; Observed band size: 150 kD)



Immunohistochemical analysis of SLC12A4 staining in rat brain, mouse brain formalin fixed paraffin embedded tissue section. The section was pre-treated using heat mediated antigen retrieval with sodium citrate buffer (pH 6.0). The section was then incubated with the antibody at room temperature and detected using an HRP conjugated compact polymer system. DAB was used as the chromogen. The section was then counterstained with haematoxylin and mounted with DPX.

**STORAGE**

Store at 4°C short term. For long term storage, store at -20°C, avoiding freeze/thaw cycles.

**NOTE**

For Research Use Only. Not for diagnostic, therapeutics, prophylactic or in vivo use.