

DATASHEET

Swiprosin-2 Rabbit Polyclonal Antibody

CAT. NO. APA12486

KEY FEATURES

Target	Swiprosin-2	Source / Host	Rabbit
Reactivity	Human	Clonality	Polyclonal
Applications	WB	Conjugation	Unconjugated
Form / Buffer	Liquid in 0.42% Potassium phosphate, 0.87% Sodium chloride, pH 7.3, 30% glycerol, and 0.01% sodium azide.		Storage at -20°C

BACKGROUND

Acts as a calcium sensor for mitochondrial flash (mitoflash) activation, an event characterized by stochastic bursts of superoxide production activation, an event characterized by stochastic bursts of superoxide production . May play a role in neuronal differentiation .

APPLICATION

To ensure optimal assay performance, AREX recommends conducting reagent titration tailored to each testing system for optimal detection results.

WB	1:1000 - 1:2000
----	-----------------

*Results are sample-specific. Please refer to your local assay conditions and test parameters for reference.

PRODUCT OVERVIEW

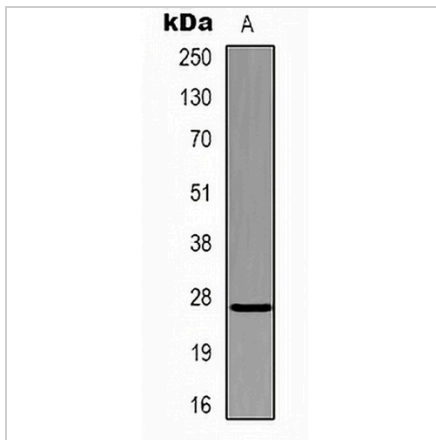
Description	Rabbit polyclonal antibody to Swiprosin-2
Specificity	Recognizes endogenous levels of Swiprosin-2 protein.
Antibody Type	Primary antibody
Immunogen	Recombinant protein corresponding to human Swiprosin-2.
Purification	The antibody was purified by immunogen affinity chromatography.
Molecular Weight	Predicted: 26 kD; Observed: 27 kD
Form/Buffer	Liquid in 0.42% Potassium phosphate, 0.87% Sodium chloride, pH 7.3, 30% glycerol, and 0.01% sodium azide.
Alternative Names	SWS2; EF-hand domain-containing protein D1; EF-hand domain-containing protein 1; Swiprosin-2
Gene Symbol	EFHD1
Entrez Gene	80303(Human)
SwissProt	Q9BUP0(Human)

*AREX continuously optimizes our products. Webpage content may not reflect the latest updates. For inquiries, please contact info@arexbio.com or your local distributor.

*Clone Number, Reactivity, Source/Host and Clonality can be found in the product name and Key Features section above.

DATASHEET**Swiprosin-2 Rabbit Polyclonal Antibody**

CAT. NO. APA12486

DATA

Western blot analysis of Swiprosin-2 expression in 293T (A) whole cell lysates. (Predicted band size: 26 kD; Observed band size: 27 kD)

STORAGE

Store at 4°C short term. For long term storage, store at -20°C, avoiding freeze/thaw cycles.

NOTE

For Research Use Only. Not for diagnostic, therapeutics, prophylactic or in vivo use.