

DATASHEET

COVID-19 Envelope Protein Rabbit Polyclonal Antibody

CAT. NO. APA12521

KEY FEATURES

Target	COVID-19 Envelope Protein	Source / Host	Rabbit
Reactivity	COVID-19	Clonality	Polyclonal
Applications	WB, ELISA	Conjugation	Unconjugated
Form / Buffer	Liquid in 0.42% Potassium phosphate, 0.87% Sodium chloride, pH 7.3, 30% glycerol, and 0.01% sodium azide.		Storage at -20°C

BACKGROUND

Plays a central role in virus morphogenesis and assembly. Acts as a viroporin and self-assembles in host membranes forming pentameric protein-lipid pores that allow ion transport. Also plays a role in the induction of apoptosis. Regulates the localization of S protein at cis-Golgi, the place of virus budding. May act by slowing down the cell secretory pathway. May interfere with tight-junction stability by interacting with host MPP5. This would result in disruption of epithelial barriers, thereby amplifying inflammatory processes.

APPLICATION

To ensure optimal assay performance, AREX recommends conducting reagent titration tailored to each testing system for optimal detection results.

WB	1:1000 - 1:3000
ELISA	Use at an assay dependent dilution

*Results are sample-specific. Please refer to your local assay conditions and test parameters for reference.

PRODUCT OVERVIEW

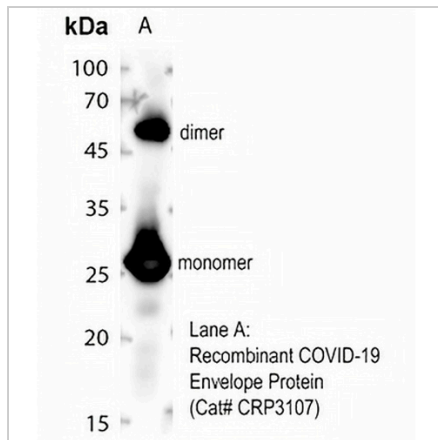
Description	Rabbit polyclonal antibody to COVID-19 Envelope Protein
Specificity	Recognizes COVID-19 Envelope Protein.
Antibody Type	Primary antibody
Immunogen	KLH-conjugated synthetic peptide encompassing a sequence within the C-term region of COVID-19 Envelope Protein. The exact sequence is proprietary.
Purification	The antibody was purified by immunogen affinity chromatography.
Molecular Weight	Predicted: \; Observed: 26 kD
Form/Buffer	Liquid in 0.42% Potassium phosphate, 0.87% Sodium chloride, pH 7.3, 30% glycerol, and 0.01% sodium azide.
Alternative Names	Envelope small membrane protein; E protein; sM protein
Gene Symbol	E
Entrez Gene	43740570(Human)
SwissProt	PODTC4(Human)

*AREX continuously optimizes our products. Webpage content may not reflect the latest updates. For inquiries, please contact info@arexbio.com or your local distributor.

*Clone Number, Reactivity, Source/Host and Clonality can be found in the product name and Key Features section above.

DATASHEET**COVID-19 Envelope Protein Rabbit Polyclonal Antibody**

CAT. NO. APA12521

DATA

Western blot analysis of COVID-19 Envelope Protein using Recombinant COVID-19 Envelope Protein (A). (Predicted band size: \; Observed band size: 26 kD)

STORAGE

Store at 4°C short term. For long term storage, store at -20°C, avoiding freeze/thaw cycles.

NOTE

For Research Use Only. Not for diagnostic, therapeutics, prophylactic or in vivo use.