

DATASHEET

ABF3 Rabbit Polyclonal Antibody

CAT. NO. APA12522

KEY FEATURES

Target	ABF3	Source / Host	Rabbit
Reactivity	Arabidopsis thaliana	Clonality	Polyclonal
Applications	WB	Conjugation	Unconjugated
Form / Buffer	Liquid in 0.42% Potassium phosphate, 0.87% Sodium chloride, pH 7.3, 30% glycerol, and 0.01% sodium azide.		Storage at-20°C

BACKGROUND

Binds to the ABA-responsive element (ABRE). Mediates stress-responsive ABA signaling.

APPLICATION

To ensure optimal assay performance, AREX recommends conducting reagent titration tailored to each testing system for optimal detection results.

WB	1:500 - 1:2000
----	----------------

*Results are sample-specific. Please refer to your local assay conditions and test parameters for reference.

PRODUCT OVERVIEW

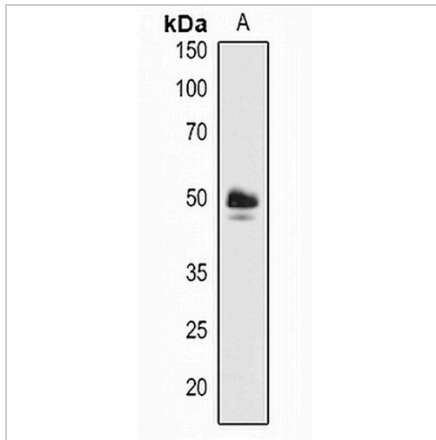
Description	Rabbit polyclonal antibody to ABF3
Specificity	Recognizes endogenous levels of ABF3 protein.
Antibody Type	Primary antibody
Immunogen	KLH-conjugated synthetic peptide encompassing a sequence within the N-term region of arabidopsis thaliana ABF3. The exact sequence is proprietary.
Purification	The antibody was purified by immunogen affinity chromatography.
Molecular Weight	Predicted: 49 kD; Observed: 50 kD
Form/Buffer	Liquid in 0.42% Potassium phosphate, 0.87% Sodium chloride, pH 7.3, 30% glycerol, and 0.01% sodium azide.
Alternative Names	BZIP37; DPBF5; ABSCISIC ACID-INSENSITIVE 5-like protein 6; Abscisic acid responsive elements-binding factor 3; ABRE-binding factor 3; Dc3 promoter-binding factor 5; AtDPBF5; bZIP transcription factor 37; AtbZIP37
Gene Symbol	ABF3
Entrez Gene	829547(Human)
SwissProt	Q9M7Q3(Human)

*AREX continuously optimizes our products. Webpage content may not reflect the latest updates. For inquiries, please contact info@arexbio.com or your local distributor.

*Clone Number, Reactivity, Source/Host and Clonality can be found in the product name and Key Features section above.

DATASHEET**ABF3 Rabbit Polyclonal Antibody**

CAT. NO. APA12522

DATA

Western blot analysis of ABF3 expression in Arabidopsis thaliana (A) whole cell lysates.
(Predicted band size: 49 kD; Observed band size: 50 kD)

STORAGE

Store at 4°C short term. For long term storage, store at -20°C, avoiding freeze/thaw cycles.

NOTE

For Research Use Only. Not for diagnostic, therapeutics, prophylactic or in vivo use.