

DATASHEET

ABI2 Rabbit Polyclonal Antibody

CAT. NO. APA12523

KEY FEATURES

Target	ABI2	Source / Host	Rabbit
Reactivity	Arabidopsis thaliana	Clonality	Polyclonal
Applications	WB	Conjugation	Unconjugated
Form / Buffer	Liquid in 0.42% Potassium phosphate, 0.87% Sodium chloride, pH 7.3, 30% glycerol, and 0.01% sodium azide.		Storage at -20°C

BACKGROUND

Repressor of the abscisic acid (ABA) signaling pathway that regulates numerous ABA responses, such as stomatal closure, osmotic water permeability of the plasma membrane (Pos), high light stress, response to glucose, seed germination and inhibition of vegetative growth. During the stomatal closure regulation, modulates the inward calcium-channel permeability as well as H₂O₂ and oxidative burst in response to ABA and dehydration. Represses GHR1 and, to some extent, SRK2E/OST1, kinases involved in the regulation of SLAC1-dependent stomatal closure signaling pathway that regulates numerous ABA responses, such as stomatal closure, osmotic water permeability of the plasma membrane (Pos), high light stress, response to glucose, seed germination and inhibition of vegetative growth.

APPLICATION

To ensure optimal assay performance, AREX recommends conducting reagent titration tailored to each testing system for optimal detection results.

WB	1:500 - 1:2000
----	----------------

*Results are sample-specific. Please refer to your local assay conditions and test parameters for reference.

PRODUCT OVERVIEW

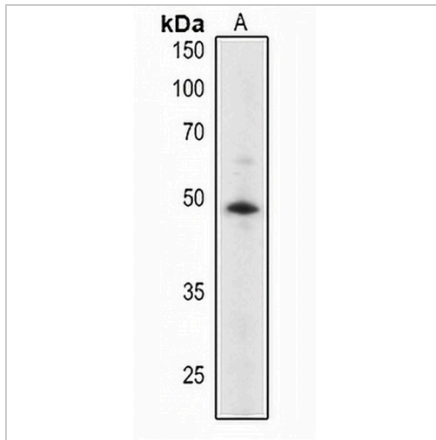
Description	Rabbit polyclonal antibody to ABI2
Specificity	Recognizes endogenous levels of ABI2 protein.
Antibody Type	Primary antibody
Immunogen	KLH-conjugated synthetic peptide encompassing a sequence within the C-term region of arabidopsis thaliana ABI2. The exact sequence is proprietary.
Purification	The antibody was purified by immunogen affinity chromatography.
Molecular Weight	Predicted: 46 kD; Observed: 46 kD
Form/Buffer	Liquid in 0.42% Potassium phosphate, 0.87% Sodium chloride, pH 7.3, 30% glycerol, and 0.01% sodium azide.
Alternative Names	PP2C77; Protein phosphatase 2C 77; AtPP2C77; Protein ABSCISIC ACID-INSENSITIVE 2; Protein phosphatase 2C ABI2; PP2C ABI2
Gene Symbol	ABI2
Entrez Gene	835809(Human)
SwissProt	O04719(Human)

*AREX continuously optimizes our products. Webpage content may not reflect the latest updates. For inquiries, please contact info@arexbio.com or your local distributor.

*Clone Number, Reactivity, Source/Host and Clonality can be found in the product name and Key Features section above.

DATASHEET**ABI2 Rabbit Polyclonal Antibody**

CAT. NO. APA12523

DATA

Western blot analysis of ABI2 expression in Arabidopsis thaliana (A) whole cell lysates.
(Predicted band size: 46 kD; Observed band size: 46 kD)

STORAGE

Store at 4°C short term. For long term storage, store at -20°C, avoiding freeze/thaw cycles.

NOTE

For Research Use Only. Not for diagnostic, therapeutics, prophylactic or in vivo use.