

**DATASHEET**

**CFBP1 Rabbit Polyclonal Antibody**

CAT. NO. APA12527

**KEY FEATURES**

Target	CFBP1	Source / Host	Rabbit
Reactivity	Arabidopsis thaliana	Clonality	Polyclonal
Applications	WB	Conjugation	Unconjugated
Form / Buffer	Liquid in 0.42% Potassium phosphate, 0.87% Sodium chloride, pH 7.3, 30% glycerol, and 0.01% sodium azide.		Storage at -20°C

**BACKGROUND**

Catalyzes the irreversible reaction from fructose-1,6-bisphosphate to fructose-6-phosphate and inorganic phosphate, to regenerate the primary CO<sub>2</sub> acceptor molecule, ribulose-1,5-bisphosphate (Probable). Involved in the regulation of photosynthetic electron flow and sucrose synthesis acceptor molecule, ribulose-1,5-bisphosphate (Probable). Involved in the regulation of photosynthetic electron flow and sucrose synthesis . Its activity is critical for normal plant development and important for the regulation of a wide range of metabolic processes .

**APPLICATION**

To ensure optimal assay performance, AREX recommends conducting reagent titration tailored to each testing system for optimal detection results.

WB	1:500 - 1:2000
----	----------------

\*Results are sample-specific. Please refer to your local assay conditions and test parameters for reference.

**PRODUCT OVERVIEW**

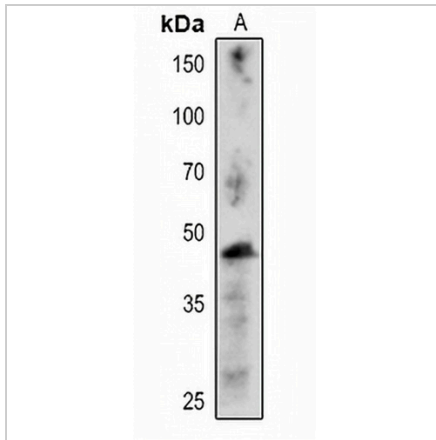
Description	Rabbit polyclonal antibody to CFBP1
Specificity	Recognizes endogenous levels of CFBP1 protein.
Antibody Type	Primary antibody
Immunogen	KLH-conjugated synthetic peptide encompassing a sequence within the center region of arabidopsis thaliana CFBP1. The exact sequence is proprietary.
Purification	The antibody was purified by immunogen affinity chromatography.
Molecular Weight	Predicted: 45 kD; Observed: 45 kD
Form/Buffer	Liquid in 0.42% Potassium phosphate, 0.87% Sodium chloride, pH 7.3, 30% glycerol, and 0.01% sodium azide.
Alternative Names	FBP; HCEF1Fructose-1-6-bisphosphatase 1 chloroplastic; FBPase1; D-fructose-1; 6-bisphosphate 1-phosphohydrolase; Protein HIGH CYCLIC ELECTRON FLOW 1
Gene Symbol	CFBP1
Entrez Gene	824572(Human)
SwissProt	P25851(Human)

\*AREX continuously optimizes our products. Webpage content may not reflect the latest updates. For inquiries, please contact [info@arexbio.com](mailto:info@arexbio.com) or your local distributor.

\*Clone Number, Reactivity, Source/Host and Clonality can be found in the product name and Key Features section above.

**DATASHEET****CFBP1 Rabbit Polyclonal Antibody**

CAT. NO. APA12527

**DATA**

Western blot analysis of CFBP1 expression in *Arabidopsis thaliana* (A) whole cell lysates.  
(Predicted band size: 45 kD; Observed band size: 45 kD)

**STORAGE**

Store at 4°C short term. For long term storage, store at -20°C, avoiding freeze/thaw cycles.

**NOTE**

For Research Use Only. Not for diagnostic, therapeutics, prophylactic or in vivo use.