

DATASHEET

CRD1 Rabbit Polyclonal Antibody

CAT. NO. APA12528

KEY FEATURES

Target	CRD1	Source / Host	Rabbit
Reactivity	Arabidopsis thaliana	Clonality	Polyclonal
Applications	WB	Conjugation	Unconjugated
Form / Buffer	Liquid in 0.42% Potassium phosphate, 0.87% Sodium chloride, pH 7.3, 30% glycerol, and 0.01% sodium azide.		Storage at-20°C

BACKGROUND

Catalytic component of the MgProto monomethylester (MgProtoME) cyclase complex that catalyzes the formation of the isocyclic ring in chlorophyll biosynthesis cyclase complex that catalyzes the formation of the isocyclic ring in chlorophyll biosynthesis. Mediates the cyclase reaction, which results in the formation of divinylprotochlorophyllide (Pchlde) characteristic of all chlorophylls from magnesium-protoporphyrin IX 13-monomethyl ester (MgPMME).

APPLICATION

To ensure optimal assay performance, AREX recommends conducting reagent titration tailored to each testing system for optimal detection results.

WB	1:500 - 1:2000
----	----------------

*Results are sample-specific. Please refer to your local assay conditions and test parameters for reference.

PRODUCT OVERVIEW

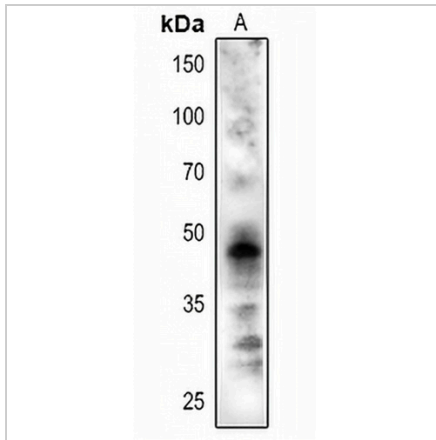
Description	Rabbit polyclonal antibody to CRD1
Specificity	Recognizes endogenous levels of CRD1 protein.
Antibody Type	Primary antibody
Immunogen	KLH-conjugated synthetic peptide encompassing a sequence within the center region of arabidopsis thaliana CRD1. The exact sequence is proprietary.
Purification	The antibody was purified by immunogen affinity chromatography.
Molecular Weight	Predicted: 47 kD; Observed: 47 kD
Form/Buffer	Liquid in 0.42% Potassium phosphate, 0.87% Sodium chloride, pH 7.3, 30% glycerol, and 0.01% sodium azide.
Alternative Names	ACSF; AT103; CHL27; ZIP; Magnesium-protoporphyrin IX monoMethyl-ester [oxidative] cyclase chloroplastic; Mg-protoporphyrin IX monoMethyl-ester oxidative cyclase; Copper response defect 1 protein; Dicarboxylate diiron protein; AtZIP; MPE-cyclase
Gene Symbol	CRD1
Entrez Gene	824861(Human)
SwissProt	Q9M591(Human)

*AREX continuously optimizes our products. Webpage content may not reflect the latest updates. For inquiries, please contact info@arexbio.com or your local distributor.

*Clone Number, Reactivity, Source/Host and Clonality can be found in the product name and Key Features section above.

DATASHEET**CRD1 Rabbit Polyclonal Antibody**

CAT. NO. APA12528

DATA

Western blot analysis of CRD1 expression in Arabidopsis thaliana (A) whole cell lysates.
(Predicted band size: 47 kD; Observed band size: 47 kD)

STORAGE

Store at 4°C short term. For long term storage, store at -20°C, avoiding freeze/thaw cycles.

NOTE

For Research Use Only. Not for diagnostic, therapeutics, prophylactic or in vivo use.