

DATASHEET
CSN5A/B Rabbit Polyclonal Antibody
CAT. NO. APA12529
KEY FEATURES

Target	CSN5A/B	Source / Host	Rabbit
Reactivity	Arabidopsis thaliana	Clonality	Polyclonal
Applications	WB	Conjugation	Unconjugated
Form / Buffer	Liquid in 0.42% Potassium phosphate, 0.87% Sodium chloride, pH 7.3, 30% glycerol, and 0.01% sodium azide.		Storage at -20°C

BACKGROUND

Probable protease subunit of the COP9 signalosome complex (CSN), a complex involved in various cellular and developmental processes such as photomorphogenesis and auxin and jasmonate responses. The CSN complex is an essential regulator of the ubiquitin (Ubl) conjugation pathway by mediating the deneddylation of the cullin subunits of the SCF-type E3 ligase complexes, leading to decrease the Ubl ligase activity of SCF. In the complex, it probably acts as the catalytic center that mediates the cleavage of Nedd8 from cullins. It however has no metalloprotease activity by itself and requires the other subunits of the CSN complex. The CSN complex is involved in repression of photomorphogenesis in darkness by regulating the activity of COP1-containing Ubl ligase complexes.

APPLICATION

To ensure optimal assay performance, AREX recommends conducting reagent titration tailored to each testing system for optimal detection results.

WB	1:500 - 1:2000
----	----------------

*Results are sample-specific. Please refer to your local assay conditions and test parameters for reference.

PRODUCT OVERVIEW

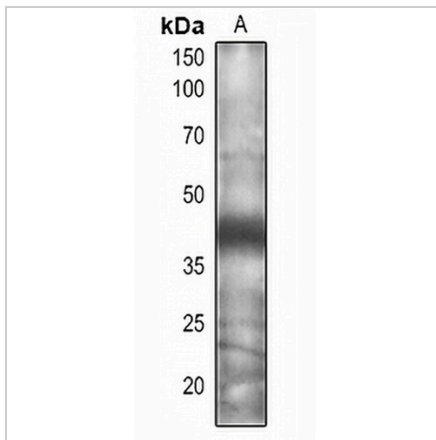
Description	Rabbit polyclonal antibody to CSN5A/B
Specificity	Recognizes endogenous levels of CSN5A/B protein.
Antibody Type	Primary antibody
Immunogen	KLH-conjugated synthetic peptide encompassing a sequence within the center region of arabidopsis thaliana CSN5A/B. The exact sequence is proprietary.
Purification	The antibody was purified by immunogen affinity chromatography.
Molecular Weight	Predicted: 39; Observed: 40 kD
Form/Buffer	Liquid in 0.42% Potassium phosphate, 0.87% Sodium chloride, pH 7.3, 30% glycerol, and 0.01% sodium azide.
Alternative Names	AJH1; CSN5B; COP9 signalosome complex subunit 5a; Signalosome subunit 5a; Jun activation domain-binding homolog 1; AJH2; CSN5A; COP9 signalosome complex subunit 5b; Signalosome subunit 5b; Jun activation domain-binding homolog 2
Gene Symbol	CSN5A; CSN5B
Entrez Gene	838899; 843463(Human)
SwissProt	Q8LAZ7; Q9FVU9(Human)

*AREX continuously optimizes our products. Webpage content may not reflect the latest updates. For inquiries, please contact info@arexbio.com or your local distributor.

*Clone Number, Reactivity, Source/Host and Clonality can be found in the product name and Key Features section above.

DATASHEET**CSN5A/B Rabbit Polyclonal Antibody**

CAT. NO. APA12529

DATA

Western blot analysis of CSN5A/B expression in Arabidopsis thaliana (A) whole cell lysates. (Predicted band size: 39; 40 kD; Observed band size: 40 kD)

STORAGE

Store at 4°C short term. For long term storage, store at -20°C, avoiding freeze/thaw cycles.

NOTE

For Research Use Only. Not for diagnostic, therapeutics, prophylactic or in vivo use.