

DATASHEET

DEGP1 Rabbit Polyclonal Antibody

CAT. NO. APA12531

KEY FEATURES

Target	DEGP1	Source / Host	Rabbit
Reactivity	Arabidopsis thaliana	Clonality	Polyclonal
Applications	WB	Conjugation	Unconjugated
Form / Buffer	Liquid in 0.42% Potassium phosphate, 0.87% Sodium chloride, pH 7.3, 30% glycerol, and 0.01% sodium azide.		Storage at -20°C

BACKGROUND

Serine protease that is required at high temperature. May be involved in the degradation of damaged proteins. In vivo, can degrade beta-casein.

APPLICATION

To ensure optimal assay performance, AREX recommends conducting reagent titration tailored to each testing system for optimal detection results.

WB	1:500 - 1:2000
----	----------------

*Results are sample-specific. Please refer to your local assay conditions and test parameters for reference.

PRODUCT OVERVIEW

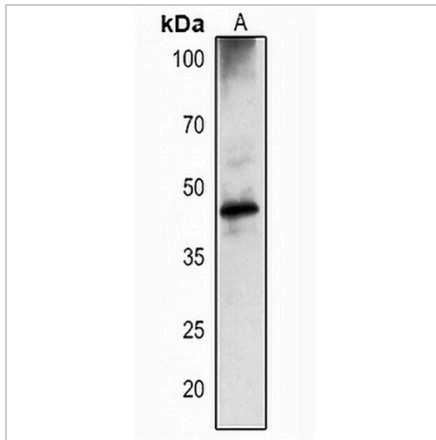
Description	Rabbit polyclonal antibody to DEGP1
Specificity	Recognizes endogenous levels of DEGP1 protein.
Antibody Type	Primary antibody
Immunogen	KLH-conjugated synthetic peptide encompassing a sequence within the C-term region of arabidopsis thaliana DEGP1. The exact sequence is proprietary.
Purification	The antibody was purified by immunogen affinity chromatography.
Molecular Weight	Predicted: 46 kD; Observed: 44 kD
Form/Buffer	Liquid in 0.42% Potassium phosphate, 0.87% Sodium chloride, pH 7.3, 30% glycerol, and 0.01% sodium azide.
Alternative Names	DEG1; DEGP; Protease Do-like 1 chloroplastic; Protein DEGRADATION OF PERIPLASMIC PROTEINS 1; DEGP PROTEASE 1
Gene Symbol	DEGP1
Entrez Gene	822416(Human)
SwissProt	O22609(Human)

*AREX continuously optimizes our products. Webpage content may not reflect the latest updates. For inquiries, please contact info@arexbio.com or your local distributor.

*Clone Number, Reactivity, Source/Host and Clonality can be found in the product name and Key Features section above.

DATASHEET**DEGP1 Rabbit Polyclonal Antibody**

CAT. NO. APA12531

DATA

Western blot analysis of DEGP1 expression in *Arabidopsis thaliana* (A) whole cell lysates.
(Predicted band size: 46 kD; Observed band size: 44 kD)

STORAGE

Store at 4°C short term. For long term storage, store at -20°C, avoiding freeze/thaw cycles.

NOTE

For Research Use Only. Not for diagnostic, therapeutics, prophylactic or in vivo use.