

DATASHEET

GDH1/2/3 Rabbit Polyclonal Antibody

CAT. NO. APA12534

KEY FEATURES

Target	GDH1/2/3	Source / Host	Rabbit
Reactivity	Arabidopsis thaliana	Clonality	Polyclonal
Applications	WB	Conjugation	Unconjugated
Form / Buffer	Liquid in 0.42% Potassium phosphate, 0.87% Sodium chloride, pH 7.3, 30% glycerol, and 0.01% sodium azide.		Storage at -20°C

BACKGROUND

The glycine decarboxylase (GDC) or glycine cleavage system catalyzes the degradation of glycine. The H protein shuttles the methylamine group of glycine from the P protein to the T protein.

APPLICATION

To ensure optimal assay performance, AREX recommends conducting reagent titration tailored to each testing system for optimal detection results.

WB	1:500 - 1:2000
----	----------------

*Results are sample-specific. Please refer to your local assay conditions and test parameters for reference.

PRODUCT OVERVIEW

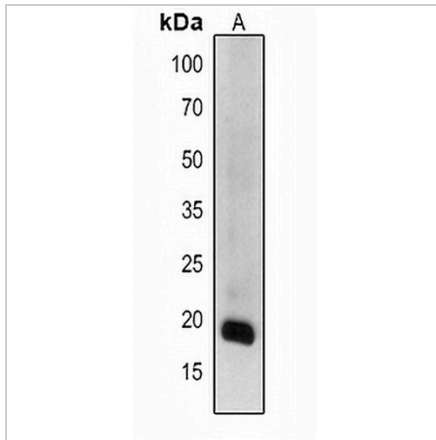
Description	Rabbit polyclonal antibody to GDH1/2/3
Specificity	Recognizes endogenous levels of GDH1/2/3 protein.
Antibody Type	Primary antibody
Immunogen	KLH-conjugated synthetic peptide encompassing a sequence within the center region of arabidopsis thaliana GDH1/2/3. The exact sequence is proprietary.
Purification	The antibody was purified by immunogen affinity chromatography.
Molecular Weight	Predicted: 17 kD; Observed: 18 kD
Form/Buffer	Liquid in 0.42% Potassium phosphate, 0.87% Sodium chloride, pH 7.3, 30% glycerol, and 0.01% sodium azide.
Alternative Names	GCDH; GDCH; GDCSH; Glycine cleavage system H protein 1 mitochondrial; Glycine cleavage system H protein 2 mitochondrial; Glycine cleavage system H protein 3 mitochondrial
Gene Symbol	GDH1; GDH2; GDH3
Entrez Gene	818104; 818078; 840141(Human)
SwissProt	P25855; O82179; Q9LQL0(Human)

*AREX continuously optimizes our products. Webpage content may not reflect the latest updates. For inquiries, please contact info@arexbio.com or your local distributor.

*Clone Number, Reactivity, Source/Host and Clonality can be found in the product name and Key Features section above.

DATASHEET**GDH1/2/3 Rabbit Polyclonal Antibody**

CAT. NO. APA12534

DATA

Western blot analysis of GDH1/2/3 expression in *Arabidopsis thaliana* (A) whole cell lysates. (Predicted band size: 17 kD; Observed band size: 18 kD)

STORAGE

Store at 4°C short term. For long term storage, store at -20°C, avoiding freeze/thaw cycles.

NOTE

For Research Use Only. Not for diagnostic, therapeutics, prophylactic or in vivo use.